



Folder Guard Help Contents

Welcome to Folder Guard!

[Overview](#)
[What's new in this version](#)
[System requirements](#)
[This is "Try Before You Buy" software](#)
[Evaluation vs continued use](#)
[What do you get when you order a license for Folder Guard](#)
[How to order a license for continued use of Folder Guard](#)
[Obtaining updates to Folder Guard](#)
[Getting customer support](#)
[How to access Folder Guard Help](#)
[Acknowledgments](#)

Installing Folder Guard

[How to install Folder Guard](#)
[Using the Setup utility](#)
[Uninstalling Folder Guard](#)

Quick Start Guide

[Introduction](#)
[Step 1. Getting your system ready](#)
[Step 2. Installing Folder Guard](#)
[Step 3. Starting Folder Guard](#)
[Step 4. Assigning attributes to the folder](#)
[Step 5. Setting up the passwords](#)
[Step 6. Building FGD file\(s\)](#)
[Step 7. Enabling the protection at Windows 95 startup](#)
[Step 8. Testing Folder Guard](#)
[What you may wish to do next...](#)

Folder Guard Basics

[Terminology](#)
[Running Folder Guard](#)
[Folder Attributes](#)
[Folder Guard window](#)
[Passwords](#)
[User List](#)
[Permissions](#)
[FGA files](#)
[FGD files](#)
[Active FGA file](#)
[Working folder](#)

Using Folder Guard

[To protect or not to protect?](#)
[Setting up for multiple users](#)

[Validating user name at logon](#)

[Giving your computer "bullet-proof" protection](#)

Reference

[Commands](#)

[Shortcuts](#)

[Dialog boxes](#)

[Files](#)

Appendices

[How FGuard.VxD searches for the FGD file\(s\)](#)

[How FGuard.VxD searches for the licensing information](#)

[How Folder Guard validates user name at logon](#)

[How to backup the Registry](#)

[A crash course in System Policies](#)

[MSDOS.SYS: Useful commands](#)

Answers to Frequently Asked Questions (FAQ)

[Can I upgrade to Folder Guard from FM Guard?](#)

[How do I enter the Registration Code?](#)

[How do I backup the Registry?](#)

[What is the System Policies?](#)

[How do I determine the status of folder protection?](#)

[Will Folder Guard slow down my computer?](#)

[How do I rename a folder in the Folder Guard window?](#)

[How do I hide drive icons?](#)

[Can I hide the "My Computer" folder?](#)

[I forgot the password...](#)

[How can I get printed documentation for Folder Guard?](#)

[How do I uninstall Folder Guard?](#)



Folder Guard Overview

Thank you for choosing Folder Guard for Windows 95 !

Folder Guard is a software-only security solution for personal or publicly accessible computers running the Windows 95 operating system. Its features include:

- Complete control over access to folders of your choice. You can hide any folder, so that its contents will be invisible to all applications including Explorer, MS Office, MS-DOS programs, common dialogs, etc.
- Optional user validation at logon, which helps protect your Windows 95 files from intruders. A log file can be set up to help you keep track of the use of your computer.
- Password access to protected folders that can be set up, or changed, at any time.
- Flexible control of user access to many Windows 95 resources, such as the Start Menu, Control Panel, etc.
- User-specific access rights to folders and to other Windows 95 resources that you can configure separately for each user of your computer.
- Easy and intuitive user interface that helps you set up the attributes of folders you want to protect, and helps you control other settings, as well.
- Protection that's transparent to both users and applications. While protecting specified folders and other resources, Folder Guard uses only about 30K of RAM.
- Help screens for each feature of Folder Guard. You can access Help from individual dialog boxes or from the main menu.
- Designed to operate with or without the use of System Policies, on a stand-alone computer or on a network.

Why do you need Folder Guard to control access to your computer? Doesn't Windows 95 itself allow you to set up restrictions or hide a folder? Well, it does, but in very limited ways. Read on....

Hiding folders

When you hide a folder using only Windows 95, that folder will indeed be invisible in an Explorer window. However, anyone using your computer can easily make the folder visible again by choosing View - Options in the menu bar of Explorer and selecting the "Show all files" option.

With Folder Guard, when you hide a folder, it actually becomes invisible to all applications. To make the folder visible again, you must either enter a valid password or logon as a user who has access to that particular folder.

Making folders read-only

Suppose you want to make a folder read-only — and all you have is Windows 95. You select that folder in an Explorer window, then press Alt+Enter to see the properties of the folder, and check the "Read-only" checkbox on the property page. Okay, what is the result? Windows 95 does not prevent you from creating new files or deleting existing files in this folder. You are still able to modify any or all of the files within the folder. You can create new subfolders or delete existing ones. In other words, you have the same full access to the folder, as before. The only change is that if you

rename a read-only folder, Windows 95 prompts you to confirm the command; and if you choose “Yes”, the folder is renamed.

With Folder Guard, you can truly make a folder “read-only”. The files in such a folder will be available for reading and executing, but all other operations — such as creating new files or subfolders, renaming or deleting the existing ones, modifying the contents of the files — will not be performed.

Validating user name at logon

You can use the built-in capabilities of Windows 95 to setup passwords for multiple users working with your computer. The problem is, however, that unless your computer is connected to a secure network, anyone can logon to Windows 95 as a new user — simply by typing a new user name at the logon prompt. Or an unauthorized user can just press the Cancel button at the logon prompt and start using the computer as the “default” user.

Folder Guard provides a means to validate every user’s name before letting him or her log on to Windows 95. Also, you can optionally set up a separate password for the “default” user. This helps ensure that authorized users are the only ones able to access Windows 95 on your computer.

Permissions

Folder Guard allows you to restrict access not only to folders, but also to some other Windows 95 resources, such as Control Panel, commands of the Start Menu, items on the Desktop, the Run and Shut Down commands, etc.

You will find Folder Guard indispensable if you share your computer with others and you don’t want any changes made to your files. Or, if you allow your kids to play games on your system from time to time, and want to be sure that everything will be OK when they finish. Or, if you don’t want your parents to see some of your files. Or, if you are a network administrator and your users give you a headache messing the files up all the time. However you use Windows 95, you may have concerns about the security, privacy, or confidentiality of your files. And now you have a single, effective solution — Folder Guard.

WARNING: Folder Guard is a powerful tool that should be used with care. Please take time reading Folder Guard Help before enabling the protection of folders!

Folder Guard includes an automatic Setup utility, allowing you to painlessly install and uninstall Folder Guard. Extensive context-sensitive Help provides a complete user’s guide to Folder Guard.

"The way software should be!"(tm)

Related topics:

[Folder Guard Help Contents](#)

[What's new in this version](#)

[System requirements](#)

[This is "Try Before You Buy" software](#)

[How to order a license for continued use of Folder Guard](#)



What Folder Guard does NOT do

Folder Guard is a powerful, but not an omnipotent, tool. Here are some important limitations you should be aware of before you start using Folder Guard:

- Folder Guard cannot restrict access to generic “virtual” folders. Only “real” folders — those folders which actually exist on your disk(s) — can be restricted with it. Folder Guard, however, does provide a way to restrict some common “virtual” folders, such as Desktop and Control Panel (see [permissions](#) in this Help for more information).
- You cannot use Folder Guard to set up different access rights to different files in the same folder. If you restrict a folder, all files contained therein are restricted in the same way.
- The protection of folders is not activated if you boot Windows 95 in the “safe” or “command prompt only” mode. You can restrict booting Windows 95 in these modes, though, by modifying the [MSDOS.SYS](#) file.
- Folder Guard does not protect folders from system tools which directly access the contents of the drives. You can, however, prevent access to such tools by placing them in hidden folders.
- Folder Guard does not protect network resources, except for the shared folders mapped to a drive letter. To protect other resources, use the built-in security features of the network.
- Folder Guard cannot protect your computer from a hammer, fire, or robbery <g>.

Note: Folder Guard helps you protect files and folders from the prying eyes of most Windows 95 users. This protection, however, is not intended to withstand attack by anyone who has sufficient time (that is, unsupervised access to your computer) and expertise.



What's new in this version

Version 4.02 (February 25, 1997)

Feature(s) added:

- A log file can be now set up to keep track of users working with the computer;
- The time dependencies of the FGA and FGD files are now checked;
- No more than one instance of FGuard.exe can now be running at a time;
- New command added to the File menu: Build All
- More screens added to the Folder Guard Advisor.
- The documentation is updated.

Bug(s) fixed:

- The permissions for the Default User are not saved in the FGA file.
- Incorrect default title of the prompt for the default user's password while validating user name at logon.

Version 4.01 (February 8, 1997)

The first release of Folder Guard for Windows 95.



System requirements

Folder Guard is designed for the Windows 95 operating system. It will NOT install or work under Windows NT (you can use the built-in security features of Windows NT instead to control access to the folders). At least 1 MB (one megabyte) of free space on your hard disk is required to install Folder Guard. Folder Guard can be used both on a stand-alone computer and on a network.



This is "Try Before You Buy" software

Folder Guard is NOT free or "public domain" software. It is **Try Before You Buy** software. This means that you may use the program during **14 days** (not necessarily constituting a contiguous sequence) to **evaluate** it and determine whether Folder Guard is suitable for your needs. At the end of this trial period, you must either register (**purchase** a license for continued use of the program) or discontinue using Folder Guard. For complete text of the evaluation use license please refer to file VENDINFO.DIZ, included in the Folder Guard distribution package.

Related topics:

[Evaluation vs Continued use](#)

[What do you get when you order a license for Folder Guard](#)

[How to order a license for continued use of Folder Guard](#)

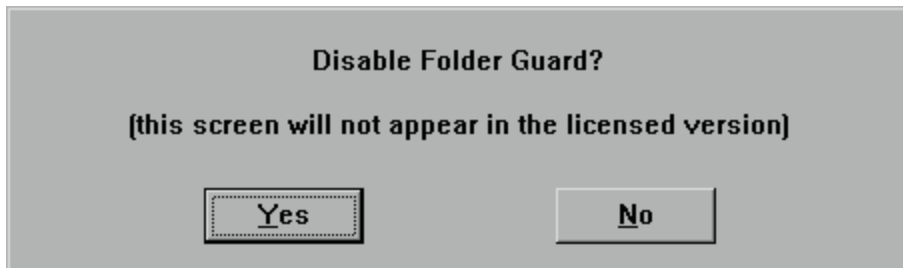
[How to enter your Registration Code](#)



Evaluation vs Continued Use

There is NO functional difference between the evaluation and the licensed versions of Folder Guard: all features of the licensed version are available and can be used in the evaluation version. Actually, it's the same program: you may convert an evaluation copy to a registered copy by entering your name and a Registration Code. Similarly, a registered copy of Folder Guard may be “unregistered” by deleting the Registration Code, or just by copying the program to another computer.

The only difference between the licensed and evaluation versions is the prompt to disable Folder Guard, displayed by the evaluation version from time to time:



While you are evaluating Folder Guard, you may reply “No” to this prompt and Folder Guard will continue its normal operation, restricting access to the folders you have chosen to protect. If someone else is using the computer, though, that user may reply “Yes” to this prompt and thus restore access to the protected folders.

To prevent this prompt from being displayed, you must register Folder Guard — either by supplying a valid Registration Code at the end of the installation procedure, or by entering the Registration Code with the “Help | About” command of Folder Guard.

To obtain a Registration Code, you must purchase a license for continued use of Folder Guard. Please refer to the ORDER.TXT file for detailed instructions and order forms. You may order Folder Guard with a check or money order. Major credit cards are accepted. You may also register via CompuServe. Purchase orders from companies are also accepted.

Please refer to ORDER.TXT for more information.

Related topics:

[This is "Try Before You Buy" software](#)

[What do you get when you order a license for Folder Guard](#)

[How to order a license for continued use of Folder Guard](#)



What do you get when you order a license for Folder Guard

1. A unique Registration Code, allowing you to remove the "Disable Folder Guard" prompt.
2. Disk with the latest version of Folder Guard and information about other ChaoSoft products.
3. The privilege to upgrade to all future versions of Folder Guard for Windows 95 **FREE** of charge.
4. **FREE** 90-day customer support.
5. **FREE** CompuServe membership with a \$15.00 usage credit. This is more than enough online time to have your technical support questions answered, and still have some fun!

Related topics:

[This is "Try Before You Buy" software](#)

[How to order a license for continued use of Folder Guard](#)

[How to enter your Registration Code](#)



How to order a license for continued use of Folder Guard

To place your order, run Folder Guard, choose the “Help - About” command in the menu, and click on “Order...” in the “About Folder Guard” screen. Alternatively, run Notepad and open file *Order.txt* (located in the folder where Folder Guard has been installed). Then follow the directions contained in the order form.

You may order Folder Guard with a check or money order. Major credit cards are accepted. You may also place your order via the CompuServe’s SWREG service. Purchase orders from companies are also accepted.

Related topics:

[This is "Try Before You Buy" software](#)

[What do you get when you order a license for Folder Guard](#)



Obtaining updates to Folder Guard

You receive the latest version of this program after you order a license for its continued use.

You can also obtain an updated evaluation copy of Folder Guard and use the same Registration Code to convert it into a registered version. The evaluation copies of Folder Guard are available from many sources, including FTP and WWW sites, online services (CompuServe, AOL, etc.), BBSes, and from disk or CD-ROM vendors. Some of these sources are listed below:

CompuServe:

GO PIKAPROG, or WINSHARE, or WINUTIL, or WUGNET, or WINUSER
search for the keyword CHAOSOFT

America On Line:

keyword PIK

FTP:

[ftp.pik.com](ftp://ftp.pik.com)
[ftp.asp-shareware.org](ftp://ftp.asp-shareware.org)
<ftp://ftp.simtel.net/pub/simtelnet>

HTTP:

<http://www.pik.com/chaosoft.html> (ChaoSoft's Home page)
<http://www.asp-shareware.org> (Association of Shareware Professionals)
<http://wugnet.com/compuServe/winuser.html> (WinUser forum on ComuServe)
<http://www.hotfiles.com> (Ziff-Davis Interactive Software Library)
(search for the keyword CHAOSOFT using any search engine on the Web for more links)



Getting customer support

Before requesting customer support, *PLEASE* check out the on-line Help for Folder Guard. In particular, be sure to look through the [Answers to Frequently Asked Questions](#) section.

If you cannot find the information you need in the documentation, then choose the support option that's right for you:

- 1) For **TECHNICAL** questions — about program features, bug reports, suggestions on improving the program, etc. — please contact the author of Folder Guard, Andrei Belogortseff, directly via e-mail at:

Internet: 74634.2173@compuserve.com
CompuServe: 74634,2173

In your message, please include information about versions of Windows and Folder Guard you are using and a detailed description of the problem. A reproducible sequence of steps leading to the problem would be of most help. *Please do not send any files to this address unless you have been instructed to do so.*

- 2) For **NON-TECHNICAL** questions — about the status of your order, sales terms, pricing and discount information, etc. — please contact the authorized dealer at:

Pik A Program, Inc.
13 Saint Marks Place
New York, NY 10003
USA

Telephone (212) 598-4939
Fax (212) 228-5879
CompuServe: 74777,3233
Internet: 74777.3233@CompuServe.com



How to access Folder Guard Help

You can access Help for Folder Guard in several ways:

- By clicking on the **Start button** in the taskbar and choosing **Folder Guard Help** from the **Folder Guard** submenu of the **Programs** menu (this option is available only if you have chosen the “Add items to Start Menu” option while installing Folder Guard).
- By opening the **Folder Guard Help** shortcut from the **Folder Guard** folder on the Desktop (this option is available only if you have chosen the “Add folder to desktop” option when installing Folder Guard).
- By using commands from Help menu while running Folder Guard.
- By opening file FGuard.hlp, located in the folder in which you have installed Folder Guard.
- By clicking on the Help button in any dialog box displayed by Folder Guard.



Acknowledgments

I would like to thank Joe Narun for his valuable help in preparing the documentation for this program.

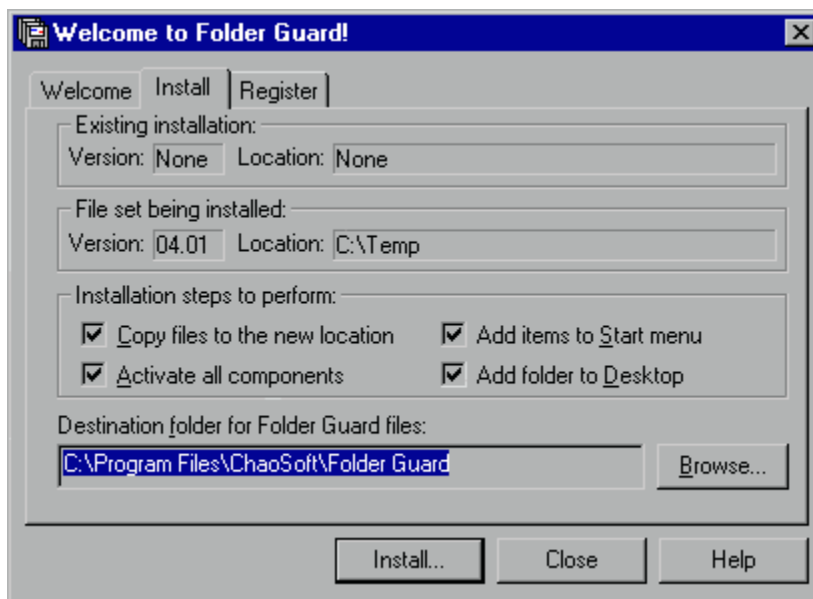


How to install Folder Guard

- If you have obtained Folder Guard as a compressed file, uncompress the file into a temporary folder on a hard disk, or on a floppy diskette.
- Open folder containing the uncompressed set of Folder Guard files and double-click on “Setup”.

Note: If you have a previous version of Folder Guard already installed on your computer and have set up the administrator’s password, you will be prompted for this password to continue the installation. Setup may also prompt you to restart Windows before the installation can be continued.

- When the “Welcome to Folder Guard!” screen appears, click on the “Next” button to switch to the “Install” page:



- Now click the “Install...” button and Setup will copy Folder Guard files into the destination folder. It will also add several items to Start Menu and create a folder named “Folder Guard” on the Desktop with shortcuts to Folder Guard files (unless you have cleared corresponding checkboxes in the “Install” page).

Note: Except for the files copied into the destination folder and, optionally, for the shortcuts added to the Start Menu and/or to the Desktop folder (as described above), Setup does not install or modify any other files on your computer.

- At the end of the installation procedure Setup prompts you to enter your name and a Registration Code. If you have purchased a license for continued use of Folder Guard and received your Registration Code, you may enter it at that time, and the evaluation version of Folder Guard will be converted into the licensed (registered) one. Otherwise, you may skip entering the Registration Code and Folder Guard will be configured to operate in the evaluation mode.
- After the installation has been complete, you may delete all the files from the temporary folder, from which you have run Setup.exe.

Note: At this point Folder Guard, although installed, in no way affects the operation of your computer.

That is, all folders can be freely accessed, as before, and no other restrictions are imposed on the use of the computer. To enable the protection of folders you must run Folder Guard (FGuard.exe) and use its commands to specify how exactly you want your computer to be protected.

Related topics:

[Using Setup utility](#)

[Quick Start Guide](#)



Using the Setup utility

Folder Guard comes with a convenient and flexible Setup utility, which allows you to install and uninstall Folder Guard.

To run Setup, open folder in which you have placed the Folder Guard files and double-click on “Setup”. A dialog box will appear, containing a number of pages.

Tip To switch between the pages *without* performing any installation steps, click on the corresponding tab at the top of the dialog box or use the Ctrl+PgUp and Ctrl+PgDn keys.

The Setup dialog box contains the following pages:

Welcome

This page is for information purposes only. Pressing the Enter key or clicking on the “Next” button while this page is active *does not perform* any installation steps and simply causes Setup to switch to the “Install” page.

Install

Use this page to specify the installation options. Pressing the Enter key or clicking on the “Next” button while this page is active *performs* the installation steps specified and switches to the “Register” page.

Register

Use this page to enter your Registration information. If you have obtained Folder Guard for evaluation purposes and do not have your Registration Code yet, simply click OK or press Enter, and Folder Guard will be configured for use in the evaluation mode. If you have purchased a license for continued use of Folder Guard and have received your Registration Code, you may enter it at this time.



”Welcome” Page of Setup

This page is for information purposes only. Pressing the Enter key or clicking on the “Next” button while this page is active *does not perform* any installation steps; it simply causes Setup to switch to the “Install” page.



”Install” Page of Setup

Use this page to specify installation options for Folder Guard. This page has the following areas:

Existing installation

Information about the version number and folder in which the existing installation of Folder Guard is detected, if any.

File set being installed

Information about the version number and location of the Folder Guard files being installed.

Installation steps to perform

Installation options. Setup suggests you these options based on the information about the existing installation of Folder Guard and the file set being installed.

Copy files to the new location

If checked, this option causes Setup to install Folder Guard files into the folder specified in the “Destination folder” field on this page. Choose this option if you are installing Folder Guard for the first time, or if you want to move an existing installation into another folder. If the files are already located in the destination folder, you may clear this checkbox.

Activate all components

If checked, this option causes Setup to update the Windows 95 configuration so that it will recognize and use Folder Guard components. Choose this option if you are installing Folder Guard for the first time, or if you want to move an existing installation into another folder.

Add items to Start Menu

If checked, this option causes Setup to add a group of menu items related to Folder Guard to Windows 95 Start Menu, under the name “Folder Guard”. You may clear this box if you don’t want such items to be added to the Start Menu. If you are moving an existing installation of Folder Guard into another folder and the “Folder Guard” group already exists, check this box to force Setup to update the group according to the new location of the Folder Guard files.

Add folder to Desktop

If checked, this option causes Setup to add a folder with shortcuts related to Folder Guard to the Desktop, under the name “Folder Guard”. You may clear this box if you don’t want such a folder to be created. If you are moving an existing installation of Folder Guard into another folder and the “Folder Guard” folder already exists, check this box to force Setup to update its shortcuts according to the new location of the Folder Guard files.

Destination folder for Folder Guard files

The folder in which Folder Guard files are to be installed. You may accept the default folder suggested by Setup, or choose another one, by clicking on the “Browse” button or by typing the full path to the folder directly into the edit box. If the “Copy files to the new location” checkbox is cleared, the contents of this field is ignored by Setup and the destination folder is assumed to be the folder from which you have run Setup.exe.

Note: Pressing the Enter key or clicking the “Install” button while the “Install” page is active causes Setup to perform the installation steps specified. If you want to display a different page of the Setup dialog box without performing any installation steps, click on the corresponding tab at the top of the dialog box or use the Ctrl+PgUp and Ctrl+PgDn keys to switch between different pages.



”Register” Page of Setup

This page displays the current registration information for Folder Guard. You may use this page to enter your Registration Code, if you have purchased a license for continued use of Folder Guard. If you do so, the evaluation version of Folder Guard will be converted into the registered one.

If you are installing Folder Guard for evaluation, simply skip entering the registration information by pressing Enter or clicking OK or Close.



Uninstalling Folder Guard

Note: It is NOT sufficient to simply delete files from the Folder Guard folder in order to completely uninstall it. Please follow the procedure described below to uninstall Folder Guard and clean up your system configuration:

1. Open Control Panel.
2. Double click the “Add/Remove programs” icon.
3. When the dialog box appears, make sure that the “Install/Uninstall” page is selected.
4. Select the “Chaosoft Folder Guard” line in the list of software that can be uninstalled.
5. Click the “Add/Remove” button.

Note: If you have set up the Administrator’s password, you will be prompted for this password to continue. You may also be prompted to restart Windows before the uninstallation can be continued.

The Uninstalling Folder Guard dialog box will appear, prompting you to confirm that you want to uninstall Folder Guard. At this time, you may choose to deactivate all Folder Guard components, delete its files, delete user files related to Folder Guard, and/or reset Folder Guard settings. Press the Help button in this dialog box for more information on the options offered.

We hope you will change your mind!



”Uninstalling Folder Guard” dialog box

This dialog box is displayed by Setup when you request Windows 95 to uninstall Folder Guard. You can use it to specify the desired uninstalling options.

The dialog box has the following areas:

Deactivate all components

When checked, this option causes Windows 95 to disable folder protection, if it is currently enabled, and to remove other information related to Folder Guard from the local Windows 95 Registry. Also, this option removes the “Folder Guard” submenu from Start Menu, and the “Folder Guard” folder from the Desktop, if they have been created during the installation.

Delete application files

When checked, this option causes Folder Guard to delete its executable and auxiliary files from the folder in which Folder Guard has been installed. This option does NOT delete user files (such as FGA files), that is the files which you may have modified.

Delete user files

When checked, this option causes Folder Guard to delete user files from the folder in which Folder Guard has been installed. User files are the files which you may have modified, that is the FGA files. If you plan to re-install Folder Guard later on, you may wish to keep such files for future use. In such a case, clear this checkbox and all *.FGA files in the Folder Guard folder will be kept undisturbed during the uninstall process. Note also, that if you do want such files to be deleted and check this option, only the folder in which Folder Guard has been installed is searched for the *.FGA files. If you have created FGA files in other folders, you will need to delete them on your own.

Reset user settings

When checked, this option causes Folder Guard to delete its FGuard.cfg file, and, therefore, to reset its settings (e.g., clear history lists, reset positions of windows used by Folder Guard, re-initialize options, etc.). If you plan to re-install Folder Guard later on, you may wish to keep this information for future use. In such a case, clear this checkbox.

Note: If you want to completely uninstall Folder Guard and clear all Windows 95 resources it uses, check all options offered.

Note: If you want to temporarily deactivate Folder Guard, check only the first option, Deactivate all components. This will retain all the Folder Guard files on your disk but prevent Windows 95 from using them. To re-activate Folder Guard later on, run Setup.exe from the folder in which Folder Guard has been installed and choose “Activate all components” in the “Install” page.

Note: If you plan to re-install Folder Guard, check only the first two options, “Deactivate all components” and “Delete application files”. This will uninstall Folder Guard, but keep the user files (such as FGA files) on your disk undisturbed, so that you will be able to use them again when you re-install Folder Guard.



Quick Start with Folder Guard

This section is intended to help you get started with Folder Guard. If you don't like reading manuals, or don't want to use all features of Folder Guard, or just want to give Folder Guard a test run, this is a good place to start.

Here you'll find step-by-step instructions on how to use Folder Guard to achieve a simple (and, probably, most common) goal: **preventing unauthorized access to the contents of a specific folder on your computer**. After you have performed the steps described below, a folder of your choice, as well as all files and subfolders contained therein, will be hidden and inaccessible for all users of your computer. Only you will be able to gain access to the folder at any time by entering a valid password.

Throughout this section, a sample folder — one you want to prevent others from accessing — is called "C:\A Private Folder". If you want to restrict some other folder(s), make appropriate adjustments while following the instructions.

[Step 1. Getting your system ready.](#)

[Step 2. Installing Folder Guard.](#)

[Step 3. Starting Folder Guard](#)

[Step 4. Assigning attributes to the folder](#)

[Step 5. Setting up the passwords](#)

[Step 6. Saving the changes and building FGD file\(s\)](#)

[Step 7. Setting up the automatic enabling](#)

[Step 8. Testing Folder Guard](#)

[What you may wish to do next...](#)



Step 1. Getting your system ready

First of all, a word of **warning**: Folder Guard is a powerful tool and should be used responsibly. Using it thoughtlessly, you can inadvertently make your computer inaccessible. For example, it is very easy with Folder Guard to prevent access to the Desktop folder, and make Windows 95 load with a blank screen after you boot.

Before you begin using Folder Guard, backup the Registry. By the way, it is a good practice to backup the Registry and other important Windows 95 files before installing any new software. The procedure itself takes only a minute or two, but it will save you hours if anything goes wrong. Folder Guard comes with a simple MS-DOS batch file, REGISTRY.BAT, which you can use to automate Registry backups and restores. You can backup the Registry before or after you have installed Folder Guard.

Also, make sure you can boot Windows 95 in “Safe” mode. Folder Guard is not enabled at Windows 95 startup in “Safe” mode, so you will be able to bypass it and correct any problems.



Step 2. Installing Folder Guard

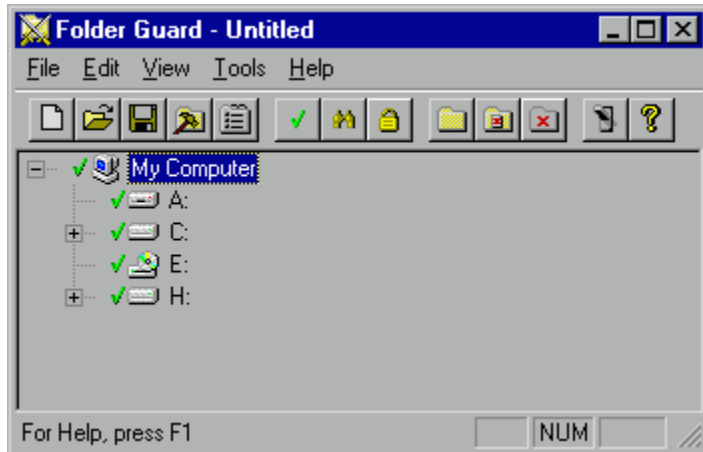
You have probably already installed Folder Guard. If not, [click here](#) for a brief review of the installation process.



Step 3. Starting Folder Guard

Now run Folder Guard. You can do this by clicking on the **Start** button in the Windows 95 Taskbar and choosing **Programs => Folder Guard => Folder Guard** in the Start menu. Or, by opening the **Folder Guard** folder created on your Desktop during the installation of Folder Guard, and double-clicking the **Folder Guard** shortcut. One more way to start Folder Guard is to open the folder in which you have installed Folder Guard, and double-click on the FGuard.exe file.

No matter which way you choose, the main window of Folder Guard should appear on your screen:



The window shows the hierarchy of folders on your computer, beginning from "My Computer". Of course, your computer may have a different combination of drives than the ones shown here.



Step 4. Assigning attributes to the folder

Before Folder Guard can hide or otherwise protect the folder you have chosen, you must let Folder Guard know which folder you want to protect, and how exactly you want Folder Guard to protect it. The way to supply this information to Folder Guard is by specifying the attributes of the folder you want to be protected. First of all, take a look at the toolbar located at the top of the window (right below the menu bar).

The following group of buttons is used to specify how you want a folder to be accessible to the users:



Full access

Makes all files contained in the folder accessible without limitations, as if Folder Guard were not present. Users can open files in this folder, modify them and save them back into the same folder, rename or delete files and subfolders, etc.



Read-only access

Allows opening files in the folder, so that their contents may be viewed, but prevents saving modifications to the files into the same folder. This also prevents creating, deleting, or renaming files or subfolders.



No access

The same restrictions as above, plus prevents opening files even for reading. That is, the contents of the folder can be viewed in an Explorer window (unless you have restricted its visibility, see below), but cannot be accessed or modified in any other way.

The following group of buttons is used to control the visibility of a folder and its contents when users browse your computer with Explorer or other similar application.



Visible

Makes all files and subfolders contained in the folder, as well as the folder itself, to be visible to the user.



Restricted

Leaves the folder itself to be visible in an Explorer window, but hides all files and subfolders contained therein, unless a subfolder is explicitly set to be visible.

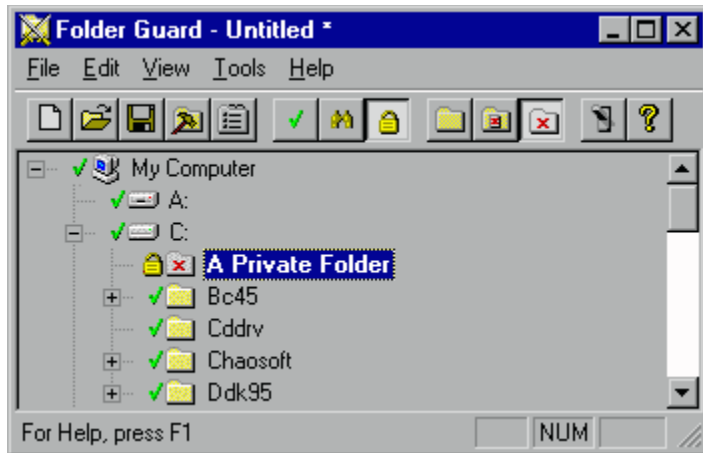


Hidden

Unconditionally hides the folder itself and all files and subfolders it contains.

Now use these buttons to assign the desired attributes to the folder you have chosen to restrict. Keep in mind, however, that at this point no actual protection is taking place. The protection will begin as soon as you enable it, later on. At this point you are only specifying how you would like the folder to be protected.

Use your mouse or arrow keys to highlight “A Private Folder” under drive C:, and click on the buttons **No access** and **Hidden** (each of the buttons will remain depressed after you click them):



That is, you have instructed Folder Guard to prevent all access to the folder, and hide the folder and its contents from browsing. Notice that the icons next to the name of the folder have changed, reflecting the attributes you have just assigned. Notice also that the name of the folder is now shown in a **bold** typeface; this indicates that the folder has non-default attributes assigned to it.



Step 5. Setting up the passwords

Folder Guard uses two passwords:

Administrator's password

You are prompted for this password whenever you run Folder Guard or its Setup utility. If you fail to set up the Administrator's password, anyone using your computer can run Folder Guard.

Folder access password

Allows a user to disable the protection of folders at run time by running FGKey.exe. If this password is not set up, the only way to disable the protection at run time is by running Folder Guard. You will probably want to set up this password to access the protected folder(s) for your own use while the protection is enabled for other users.

The commands to set up the passwords are located under the **File** menu of Folder Guard. Of course, you can use the same word for both of these passwords, if you wish.



Step 6. Saving the changes and building FGD file(s)

Now, when the attributes of the folder you want to protect and the passwords have been set up, choose the File - Save command from the menu, to save the changes in an FGA file on the disk. When the Save As dialog box appears, enter a name for the file (for example, FGuard.FGA) and press OK.

Folder Guard will save the file and prompt you to activate the file you just have saved. Reply **Yes** to this prompt, and Folder Guard will generate the FGD file(s) necessary for its work.



Step 7. Enabling the protection on Windows 95 startup

Now choose File - Settings in the menu bar of Folder Guard:



Check the **Enable folder protection at Windows startup** option and press OK. (Do not worry about other options of this dialog box — you will be able to use them later on).

Now everything is set up, and you may exit Folder Guard.

Before closing, Folder Guard will prompt you to confirm that you want the protection of folder(s) to be enabled automatically at Windows 95 startup. Choose **Yes** to continue.

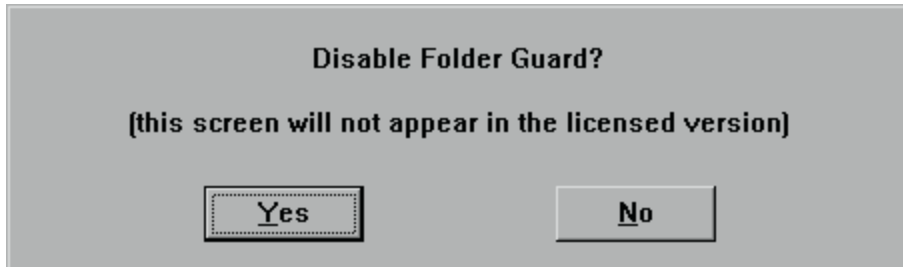
You may also be prompted to enable the folder protection. You may reply **Yes** to this prompt and Folder Guard will start to protect the folder(s) you have chosen immediately upon its exit. If you reply **No** to this prompt, the protection will be enabled only after you reboot Windows.



Step 8. Testing Folder Guard

If you have enabled the protection (as described in the previous step), Windows loads the Folder Guard driver FGuard.VxD, which reads data from the FGD file(s) and starts to protect folder(s).

The driver also attempts to find the registration information for Folder Guard. If you are still evaluating Folder Guard and have not purchased a license for its continued use, such information does not yet exist. In this situation, Folder Guard shows the following prompt:



You may reply **No** to this prompt and Folder Guard will continue its normal operation, restricting access to the folder(s) you have chosen with Folder Guard. If someone else is using the computer, though, that user may reply **Yes** to this prompt and thus restore access to the protected folders.

To verify that Folder Guard does prevent access to the folder you have chosen, run Windows 95 Explorer and make it display the contents of the C: drive. The folder you have restricted with Folder Guard ("A Private Folder" in our example) should not appear among other folder you may see in the root folder of the C: drive. If, however, you see this folder, go back to [Step 3](#) and repeat the procedure.

Now run Notepad (or any other Windows 95 application which uses Common Dialogs to open and save documents) and choose File - Open from its menu. Make the Open dialog box to display the contents of the C: drive; "A Private Folder" should not be visible in the listing either.

Try also to view the contents of the root directory of the C: drive using the MS-DOS prompt window (or run any other MS-DOS program that allows browsing the directories). The folder you have protected with Folder Guard should not appear in the directory listing (unless you have run the program after switching Windows 95 into the MS-DOS mode).

Now, as you have made sure that "A Private Folder" is indeed hidden and inaccessible, try to restore access to it. Click on the **Start** button in the taskbar and choose **Programs => Folder Guard => Toggle Folder Guard** or run FGKey.exe from the folder in which you have installed Folder Guard. You will be prompted to enter your folder access password, and, if you have entered it correctly, the protection of the folder will be disabled. Now try to find "A Private Folder" using Explorer (you may need to press F5 in an Explorer window to refresh its contents), the folder should become visible again, and you should be able to access its contents.

To re-enable the protection of the folder, you do not have to reboot Windows 95. Click on the **Start** button in the taskbar and choose **Programs => Folder Guard => Toggle Folder Guard** again. After you have replied **Yes** to the prompt to enable the protection, "A Private Folder" should disappear from the folder listing again (you may need to press F5 in an Explorer window to refresh its contents).

This is how Folder Guard works.



What you may wish to do next...

If you want to set up protection for other folders on your computer, or change attributes of the previously protected folders, you can do so with Folder Guard. You do not have to disable the protection before running Folder Guard: as part of its initialization process, Folder Guard checks the status of the protection, and, if it is enabled at that time, disables it. When you exit Folder Guard, it automatically re-enables the protection.

When setting up attributes of the folders, keep in mind that a folder may have no attributes assigned (that is, have “default” attributes). The visibility and access rights to such a folder are determined by the attributes of its “parent” folder. For example, if you assign the “read-only” access to a folder, all its subfolders with “default” attributes will have “read-only” access, too. Whenever possible, try to reduce the number of folders with “non-default” attributes; doing so will increase the efficiency of work performed by Folder Guard while protecting the folders.

Also please be aware that Windows 95 treats the “My Computer” folder, as well as the drive folders, slightly differently than the “real” folders. If you assign the “hidden” attribute to “My Computer” or to a drive, it will NOT be hidden in an Explorer window. To hide these items, you must use additional means provided by Folder Guard, the permissions, which you can control with the Edit - Permissions command.

While working with Folder Guard, you may wish to explore its possibilities by using its context-sensitive Help. In most dialog boxes, press the **Help** button, and a Help screen with information related to the dialog box will open.

With Folder Guard, it is possible to set up different attributes of the folders for different users of your computer (you must enable user profiles to let different users log on to Windows 95 using their own names and passwords). To set up the protection of folders for a specific user, select that user’s name in the User List. Then use Folder Guard commands to set up the desired visibility and access rights of the folders for the selected user. While making the changes, keep in mind that if a folder’s attributes are set to be “default” for the current user, the attributes of that folder set for the “Default User” will be used instead. The icons displayed next to the folder names show the resulting attributes of the folders for the current user.

With Folder Guard, you can control access not only to folders, but also to some other Windows 95 resources. You can do this by using the Edit - Permissions command of Folder Guard. The permissions provided by Folder Guard are equivalent to a subset of the system restrictions, which you can set up using the System Policy Editor.



Terminology

Throughout this Help, the term “Folder Guard” has two slightly different meanings, depending on the context in which it is used:

- First, Folder Guard is used to refer to all files and tools included with the software. For example, the phrase “installing Folder Guard” refers to the entire set of associated files.
- Second, Folder Guard is used to refer to the main application, the FGuard.exe file. This meaning is assumed in phrases like “running Folder Guard” or “a command of Folder Guard”.

Folder Guard (as a whole set) is used to perform two separate (although related) tasks:

- You, the Administrator of the computer (or a computer site), are using the main application of Folder Guard, FGuard.exe, to specify which folders and other Windows 95 resources should be protected, and how exactly you want them to be protected. We refer to this process as **running Folder Guard**.
- While other users work with the computer, Folder Guard performs the protection of folders according to the decisions you made. Help refers to this process as **the protection**.

The following terms are also used:

Players

Description

You

You are the Administrator. You decide how other users may access and view the information stored on your computer. You run Folder Guard to set up the access rights to the folders, and enable/disable the protection, when needed.

User

The end user who uses your computer. When the protection is enabled, Folder Guard monitors the user’s activity and restricts or allows access to the folders according to the attributes you have assigned.

Tools

Description

Explorer

The file management component of Windows 95, Explorer lets you work with files, folders, and subfolders — as well as drives and network connections. Help uses Explorer to refer solely to this particular Windows 95 component, and NOT to the Microsoft Internet Explorer.

FGuard.exe

Folder Guard, the main application you use to assign desired attributes to the folders on your computer and control other settings of Folder Guard.

FGKey.exe

A utility allowing you (or anyone else who knows the folder access password) to turn on and off the protection of folders performed by Folder Guard.

FGuard.VxD

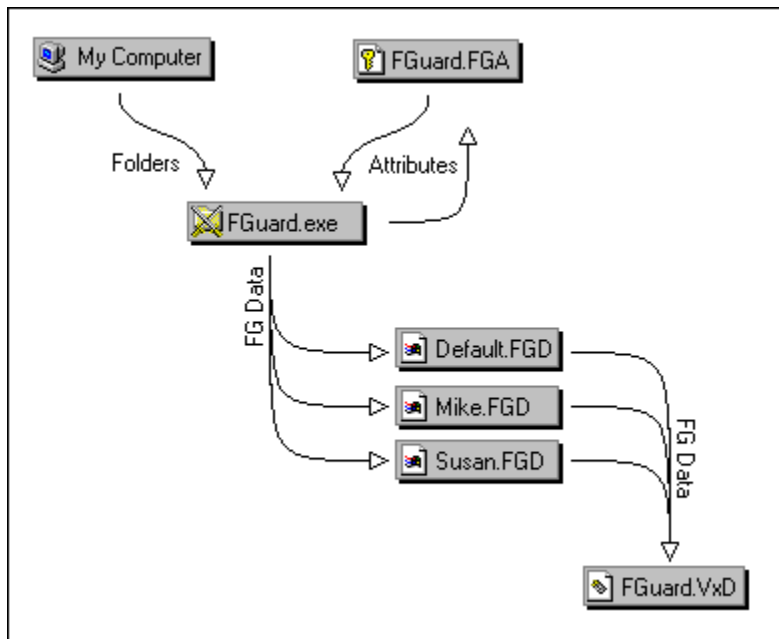
The virtual device driver that actually performs the protection.



Running Folder Guard

You can run Folder Guard by choosing the “Folder Guard” item in Windows 95 Start Menu, by opening the “Folder Guard” shortcut in the folder created on the Desktop during the installation of Folder Guard, or directly, by opening file FGuard.exe in the folder where you have installed Folder Guard.

When you run Folder Guard, it analyzes the structure of folders on your computer and displays them in its main window. Using commands of Folder Guard, you can specify how folders can be accessed and/or viewed by the user by assigning appropriate attributes to selected folders. The attributes are stored in an FGA file. Based on this information, Folder Guard prepares FGD files to be used by its driver, FGuard.VxD, when you enable the protection. The following diagram illustrates the interaction between these components of Folder Guard:





Folder Attributes

In addition to the standard attributes of folders (Read-only, Archive, Hidden, System), maintained by Windows 95 itself, Folder Guard allows you to specify additional attributes of folders. The attributes defined by Folder Guard are divided into two groups — the *access* attributes and the *visibility* attributes.

Folder Access Attributes

Attributes	Description
Full Access	Permits files stored in the folder and its subfolders to be opened, modified, renamed, deleted, etc. When you specify Full Access, any user will be able to access the folder and all its contents in all the ways that you can do so.
Read-only	Allows the opening files in the folder, so that their contents may be viewed, but prevents saving any modifications to the files into the same folder. Also prevents creating, deleting, or renaming files or subfolders.
No Access	Imposes the same restrictions as the read-only attribute, plus prevents the opening of files even for reading. Therefore, when you specify No Access, a user can view the contents of the folder in an Explorer window (unless you have restricted its visibility, see below), but the user cannot access or modify the individual files in any other way.

Folder Visibility Attributes

Attributes	Description
Visible	Makes all files and subfolders contained in the folder, as well as the folder itself, to be visible in an Explorer window.
Restricted	Leaves the folder itself to be visible in an Explorer window, but hides all files and subfolders contained therein, unless a subfolder is explicitly set to be visible.
Hidden	Unconditionally hides the folder itself and all files and subfolders it contains.

Note: Throughout this documentation, unless otherwise noted, “attributes” refers to the Folder Guard Attributes, not to the standard file/folder attributes maintained by Windows 95. Folder Guard Attributes are completely independent from the standard folder attributes, even though some of them have the same names. You may view and /or modify the standard folder attributes by selecting the desired folder in an Explorer window and pressing Alt+Enter (or, by choosing “Properties” in the Windows 95 shortcut menu).

A folder may have “default” attributes. Such a folder inherits the attributes from its parent folder. For example, if you assign the Read-only attribute to a folder, this attribute is also applied to all its subfolders which have the “default” access attribute. Likewise, if you make a folder Hidden, all its subfolders with the default visibility attribute will be considered hidden as well, unless you explicitly assign some other visibility attribute to a subfolder. There is one exception to this rule: assigning the “Restricted” attribute to a folder makes all its subfolders Hidden by default. This is consistent with the description of the “Restricted” attribute given above.

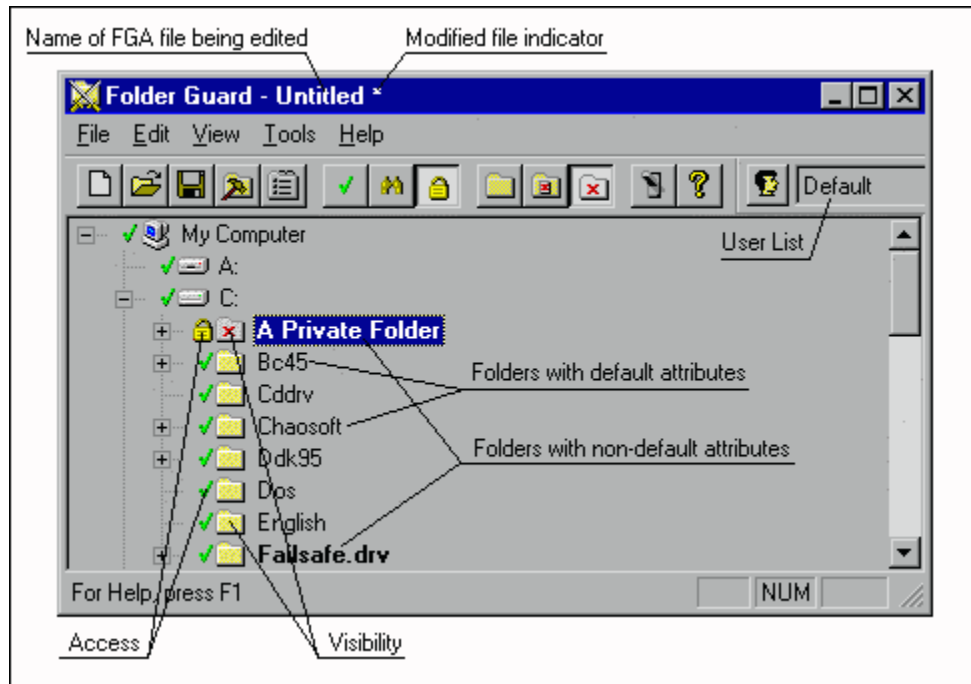
You can assign attributes to the folders by running Folder Guard and using its Edit - Access, Edit - Visibility, and Edit - Attributes commands. You can access these commands via menu bar, Toolbar or Shortcut menu.

You don’t have to assign one or another attribute to every folder on your computer. You will probably want most folders to have the “default” attributes, and assign some other attributes only to those folders you want to restrict.






Folder Guard Window

When working with Folder Guard, you can see that names of some folders are shown in its window in **bold** typeface. This indicates that such a folder has a non-default attribute assigned to it. Names of folders which have only “default” attributes are displayed in the regular typeface.






The icons shown next to the names of the folders represent their attributes:

Folder Access Attributes:

-  **Full access**
-  **Read-only access**
-  **No access**

Folder Visibility Attributes:

-  **Visible**
-  **Restricted**
-  **Hidden**

If you change an attribute of a folder, its icons also change to reflect the new attributes of the folder. Note that while you are assigning the attributes, no actual protection of folders is performed, unless you have built the FGD files and have explicitly enabled the protection.

Whenever you use Folder Guard to create a new FGA file, Folder Guard assigns the “default” attributes to all folders, with one exception: it assigns the “Full access” and “Visible” attributes to the following folders:

- The folder in which Windows 95 is installed (usually C:\Windows).
- The Windows 95 system folder (usually C:\Windows\System).

- Any folder in the root folders which has the “system” attribute assigned by Windows 95 (such as C:\Recycled).
- Any subfolder of the C:\Windows folder which has the “system” attribute assigned by Windows 95 (such as C:\Windows\Fonts).

Folder Guard does this to prevent you from inadvertently restricting access to these folders, since Windows 95 uses them during its operation. You may change these attributes, if you wish, although we do not recommend doing so. **Always backup the Registry** before experimenting with these folders!



Passwords

Folder Guard allows you to set up two different passwords:

Passwords	Description
------------------	--------------------

Administrator's	If you set up this password, Folder Guard will prompt you to enter it whenever you run Folder Guard or its Setup utility. You must also enter the old Administrator's password before changing it. If this password is not set up, Folder Guard and Setup can be run by any user. The Administrator's password is stored in the FGuard.cfg file.
-----------------	--

Folder Access	If you set up this password, you will need to enter it whenever you want to disable the protection with FGKey.exe (represented by the "Toggle folder protection" item in the Start Menu). If the password is not set up, FGKey.exe does not prompt for it and leaves the protection of folders enabled. The folder access password is stored in the FGA and FGD file(s), along with the folder attributes.
---------------	--

To set up the passwords, use the File - Password commands of Folder Guard. Of course, you may use the same word for both passwords, if you wish.

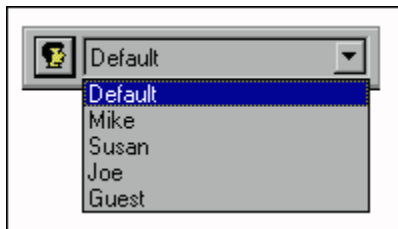
Note: The length of a password must be between 1 and 64 characters. Any characters are allowed, including spaces and punctuation. The passwords are case sensitive: If, for example, you have chosen the word "Apple" as the password, Folder Guard will not accept the words "APPLE" or "apple" as the valid passwords.



User List

Folder Guard allows you to specify different attributes of folders for different users of your computer. To set up folder protection for a specific user, you must first add the user's name to the User List, and then use Folder Guard commands to assign desired folder attributes and permissions to the user. Of course, you must also enable and create user profiles for each users before Windows 95 lets them to log on under their names.

User List is initially not shown in the Folder Guard window; to make it visible, use the View - User List command in the menu bar. The user list initially appears as a separate toolbar, but you can drag it with the mouse to any other place on the screen.



Tip You can switch the input focus between the main window of Folder Guard and User List by pressing any of the following keys: TAB, F6, CTRL+F6.

The User List initially contains a single entry, "Default", created by Folder Guard automatically whenever you create a new FGA file. This entry is always present in the User List; you cannot delete or rename it. You can use this entry to set up folder attributes and permissions common to all users of your computer.

To add additional entries to the User List, or modify the existing ones, use the Edit - User List command of Folder Guard. To set up the attributes of folders or permissions for a particular user, select this user's name in the User List. Folder Guard will automatically update its window to reflect the attributes of folders as they have been assigned for the selected user.

When specifying the folder attributes for different users, remember the following rule: If you assign the "default" attribute to a folder for a particular user, the attribute of this folder which was assigned for the "Default" user will be used instead. You can take advantage of this feature to simplify your work: First assign the attributes of folders which are common to all users of your computer to the "Default" user, then use other entries in the User List to specify those attributes applicable to each user.

You don't have to add all users of your computer to the User List: If a user logs on to Windows 95 under a name not listed in the User List, the settings specified for the "Default" user will be applied.



Permissions

Folder Guard allows you to restrict the user's access not only to folders, but also to some other Windows 95 resources. You can accomplish it with Folder Guard by assigning desired permissions to the users.

The permissions provided by Folder Guard are divided into two groups:

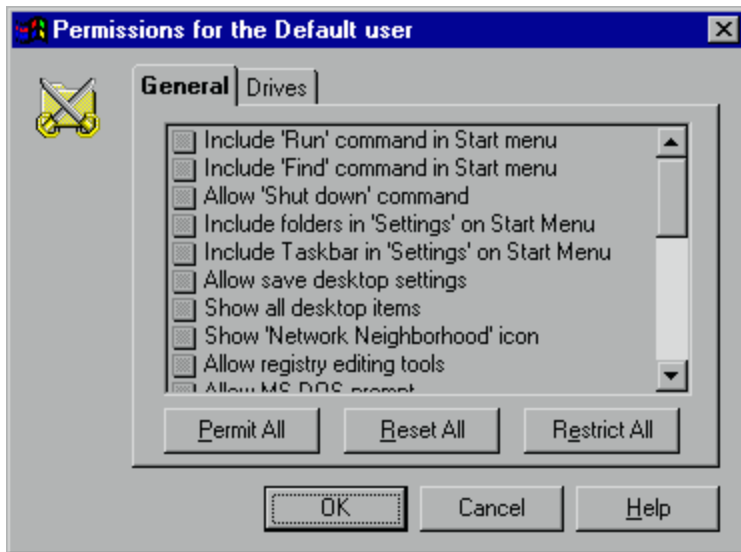
General

used to specify the user's access to some common elements of the Windows 95 user interface and tools, such as the Start Menu, Control Panel, etc.

Drives

used to control the visibility of the drive icons in the shell windows, such as My Computer.

To set up permissions for a particular user, first select user's name in the User List, and then use the Edit - Permissions command of Folder Guard.



To allow the user to access a resource, click the box next to the appropriate text in the list of permissions until a check mark appears on the box: . To restrict the user's access to the resource, make the cross mark appear on the box:

. To prevent Folder Guard from affecting the user's access to the resource (that is, to assign the "default" permission), make the box appear grayed:



If you are familiar with System Policies, you will notice the similarity between the permissions provided by Folder Guard and the restrictions provided by System Policies. For example, the permission "Include 'Run' command in Start menu" corresponds to the restriction "Remove Run command". In fact, Folder Guard permissions represent a most common subset of restrictions available with System Policies.

You don't have to use Folder Guard permissions if you are already using restrictions provided by System Policies. You may find, however, that using Folder Guard permissions is more convenient:

- With Folder Guard permissions, you can hide specific drive icons in My Computer. System Policies allow you only to hide or show all drive icons as a group;

- Folder Guard provides more flexible control over permissions assigned to different users. For instance, if you assign the “default” permission to a resource for a specific user in the User List, the permission assigned to the resource for the “Default” user is applied instead. This is in contrast to the algorithm used by System Policies — if a policy for a specific user exists, the policy for the Default user is ignored altogether.
- If the set of permissions provided by Folder Guard is sufficient for your needs, you don’t have to install and configure System Policies. Of course, if you want to set up restrictions to other resources, you must use System Policies.

Note: Although permissions provided by Folder Guard are similar to the restrictions provided by System Policies, the two are completely independent. You may use Folder Guard permissions and System Policies simultaneously on the same computer, if you wish. Remember, however, that non-default Folder Guard permissions take precedence over the corresponding restrictions provided by System Policies. If, for example, you have set up System Policies to remove the “Run” command from the Start Menu, and at the same time set up Folder Guard permission for the same user allowing him or her to have the “Run” command in the Start Menu, then the “Run” command will be included in the Start Menu when this user logs on to Windows 95.



FGA files

Folder Guard uses files with extension FGA to store the folder attributes between its sessions. After you have assigned the attributes, Folder Guard prompts you to save the changes in an FGA file. When you run Folder Guard next time, you can open the file and restore the attributes of folders.

In addition to the folder attributes, Folder Guard also stores in the FGA files the list of users (if any) you have added to the User List, the permissions assigned to each user, and the folder access password.

In most cases it is sufficient to have only one FGA file to store the information, but you may wish to create several such files, containing different data, to be used on different occasions.

To simplify and automate your work, you may find it convenient to assign one of the FGA files (usually the file you use most often) to be the "active FGA file".



FGD files

FGD files contain information about the attributes of folders and permissions for a particular user. Each of these files is prepared by Folder Guard in a format understandable by the Folder Guard driver, FGuard.VxD. In addition to the folder attributes, an FGD file also contains the following information, needed by FGuard.VxD to efficiently perform the protection:

- For each folder that you have chosen to be protected, both its long file name and the 8.3 alias (MS-DOS name) are stored.
- For root folders of the network drives, the UNC name of the drive is stored as well.
- If your computer contains only one floppy drive, then the attributes you have assigned to the A: drive are duplicated for the B: drive (and vice versa), to prevent users from accessing the floppy drive using an alternative drive letter.
- The folder access password (encoded) is placed into the FGD files as well.

Folder Guard generates FGD files when you use the File - Build or File - Build All command. (The File - Build All command is also executed automatically by Folder Guard when you save the active FGA file).

A separate FGD file is generated for each user listed in the User List, and placed into the working folder. Each FGD file is named for a particular user (that is, the user for which the FGD file was generated), and the FGD extension is appended to the file name. For example, Folder Guard places data for the Default user into the Default.FGD file. Similarly, if the User List contains the name "John", Folder Guard will place data for this user into the John.FGD file.

Note: While generating an FGD file for a particular user, Folder Guard examines the folder attributes and permissions assigned to this user, and compares these values to those assigned to the Default user. If all such user settings are identical to the settings for the Default user, Folder Guard generates a 0-length FGD file for this user. When performing the protection for such a user, Folder Guard uses the Default.FGD file. This approach enables Folder Guard to operate more efficiently. You cannot alter this default behavior.



Active FGA file

When you need to make changes to the folder attributes with Folder Guard, you usually go through the following steps:

- Running Folder Guard (FGuard.exe).
- Opening the FGA file in which you have saved the attributes of folders last time.
- Making changes to the folder attributes.
- Generating the FGD files with the File - Build All command.
- Saving the changes to the FGA file.
- Exiting Folder Guard.

Folder Guard allows you to automate several steps of this cycle by supporting the “Active file” paradigm. If you assign the status of “Active file” to the FGA file you are using (or to one of such files, if you have created several of them), Folder Guard does the following:

- Whenever you run Folder Guard, it automatically opens the active file for you during its initialization. Thus you don’t have to remember which FGA file you used last time, and don’t have to manually open it.
- Whenever you save the active file, Folder Guard automatically performs the File - Build All command for you, generating the FGD file(s). This keeps the FGD files consistent with the active FGA file.

Now you have a more streamlined way of working with Folder Guard:

- Running Folder Guard (the active FGA file is automatically opened for you at startup).
- Making changes to the attributes of the folders as desired.
- Saving the file (the FGD files are automatically updated as well).
- Exiting Folder Guard.

To set up the active FGA file and control other related settings, use the File - Settings command of Folder Guard.



Working folder

Working folder is the folder which contains files used by Folder Guard while it is performing the protection. By default, Folder Guard chooses the folder in which it has been installed to be the working folder. You have the option of assigning a different folder for this purpose, if you like, by using the File - Settings command of Folder Guard.

The working folder must contain the following files:

- The FGuard.VxD file (Folder Guard's virtual driver).
- All the FGD files generated with the File - Build All command.
- The FGuard.UNM file — if it has been generated by Folder Guard.
- The FGuard32.DLL file — if you are using the Validate user name at logon option.



To protect or not to protect?

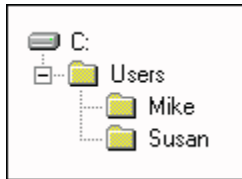
When deciding which folders you want Folder Guard to protect, consider the following issues:

- The folder in which Windows 95 is installed (usually C:\Windows) must always have the “full access” attribute. If you assign the “read-only” or “no access” attribute to this folder, Windows 95 will not load successfully.
- Most subfolders of the folder in which Windows 95 is installed (usually C:\Windows) must have their access attribute set no higher than “read-only”. You can try assigning “no access” and “hidden” attributes to such folders, but first make sure you have backed up the Registry.
- Many Windows 95 applications on your computer are installed into subfolders of the Program Files folder (usually C:\Program Files). If you restrict access to this folder, the applications installed in its subfolders may become inaccessible.
- You can assign the “no access” and “hidden” attributes to the working folder of Folder Guard. However, if you want to be able to disable the protection of your system with FGKey.exe, make the working folder “read-only” and “restricted”.
- If you assign the “restricted” attribute alone to a folder, it does not make the folder inaccessible. The contents of such a folder will be invisible for Explorer, but the user will still be able to access files in the folder by other means, such as shortcuts. To make the contents of a folder inaccessible, use the “no access” attribute as well.



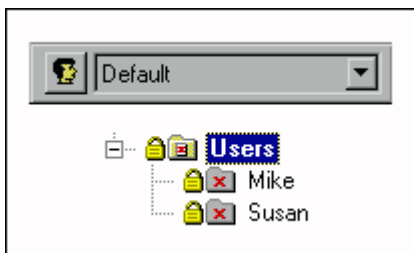
Setting up for multiple users

If you want several users to work with your computer, you will probably want to assign separate folders for each of the users, in which they would keep their personal files. For example, if your computer is to be used by two users, Mike and Susan, you may wish to create the following folders:



Now, you will probably want Mike and Susan each to have full access to the files in their own folders (C:\Users\Mike for Mike and C:\Users\Susan for Susan). But you also probably want Mike and Susan each to have no access to folders assigned to any other user. You can do this by running Folder Guard and assigning appropriate attributes to the folders:

- First select the root folder common to all users (C:\Users in our example), select the “Default” user in the User List, and assign the “No access” and “Restricted” attributes to the folder:



- Now select “Mike” in the user list, select the folder you have assigned to Mike (C:\Users\Mike), and set the “Full access” and “Visible” attributes for this folder:



- Repeat the above step for Susan, assigning the “Full access” and “Visible” attributes to her private folder.

Now, after you build the FGD files and enable the protection, Mike and Susan will have access only to his or her private subfolder of the C:\Users folder; neither will be able to see or modify files in the subfolders assigned to other users.

You may also wish to set up in the same way the system folders used by Windows 95 to store personal settings of each user. Such folders are usually created by Windows 95 as subfolders of the Profiles folder (usually C:\Windows\Profiles). There is a pitfall here: If you assign the “restricted” attribute to the Profiles folder, Windows 95 will not be able to correctly perform its logon procedure for each user. To overcome this limitation, you must use the “Validate user name at logon” option as well.

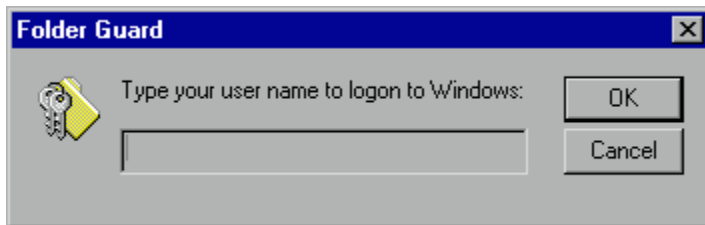


Validating user name at logon

If you have enabled user profiles on a stand-alone computer, Windows 95 displays the logon prompt and verifies the user's password before letting that user begin a Windows 95 session. This feature, however, does not make your computer secure:

- Any user can type a new name in the logon prompt. Windows 95 will simply allow this user to logon under the new name.
- Any user can press the Cancel button in the logon prompt (or press the Escape key). Windows 95 permits this user to logon as the “default” user — without requiring a password.

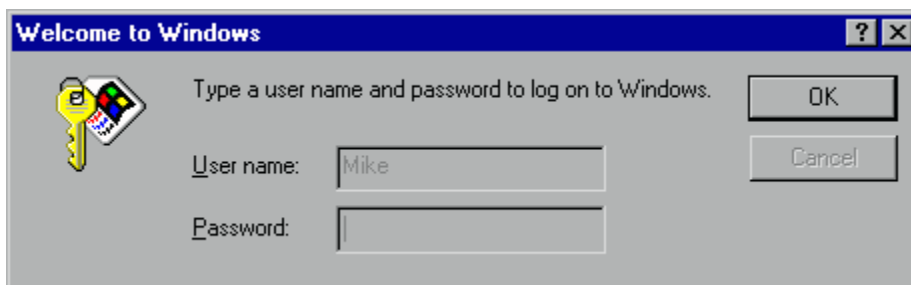
With Folder Guard, you can overcome both of these shortcomings of Windows 95. If you enable the Validate user name at logon option, then instead of the standard Windows 95 logon prompt, Folder Guard will display the following prompt:



Note: You can customize the text of this prompt, and other messages displayed by Folder Guard, while validating the user's name.

If you have also enabled the Allow logon as Default User option, the user may press the Cancel button to logon as the “Default” user.

If the user enters an invalid name at this prompt, Folder Guard displays an error message and again prompts for the user name. If the name entered is valid, the standard logon prompt appears on the screen:



To actually logon to Windows 95, the user must type a valid password into this box. Note that the “User Name” box is now read-only, which makes it impossible to change the user name at this point. The only way to logon to Windows 95 using some other name, at this stage, is to shut down the computer (by pressing Ctrl+Alt+Del), and repeat the logon sequence again. Note also that the Cancel button on the logon prompt is disabled. This prevents the user from canceling the logon and using the computer as the Default user.

If you need to add a new user to your computer, you must disable the “Validate user name at logon” option. Then, after rebooting Windows 95, use the standard Windows 95 logon prompt to let Windows

95 create entries for the new user names.



Giving your computer "bullet-proof" protection

The following recommendations will help you prevent others from bypassing the protection of folders performed by Folder Guard:

- **Restricting access to Registry editing tools.** A user can disable the protection by editing the Registry and then rebooting Windows. You can deny users access to the Registry Editor by using permissions provided by Folder Guard or by setting up appropriate restrictions with the System Policy Editor. Keep in mind, however, that you will similarly need to restrict access to the Registry editing components of third-party utilities on your computer (if any).
- **Restricting access to the working folder of Folder Guard.** While setting up folder attributes with Folder Guard, assign the "read-only" attribute to the working folder of Folder Guard. This will prevent other users from deleting or modifying Folder Guard files.
- **Preventing users from running MS-DOS programs in the MS-DOS mode.** You can achieve this by setting up the appropriate permission provided by Folder Guard or by using the Windows System Policies.
- **Preventing users from booting Windows 95 in the "safe mode" or "command prompt only".** Because the protection is not enabled at Windows 95 startup in either of these cases, it is important to restrict a user's ability to boot Windows 95 in any of these modes. You can force Windows to boot in the GUI mode only by modifying the MSDOS.SYS file, located in the root folder of the boot drive. Be sure to have a text editor on a bootable floppy disk, so that you will be able to modify this file and boot Windows 95 in the "safe mode" or "command prompt only", if needed.

Note: Folder Guard helps you protect files and folders from the prying eyes of most Windows 95 users. This protection, however, is not intended to withstand attack by anyone who has sufficient time (that is, unsupervised access to your computer) and expertise.



File menu commands

The File menu offers the following commands:

N**ew**

Creates a new FGA file.

O**pen**

Opens an existing FGA file.

S**ave**

Saves an opened FGA file using the same file name.

S**ave As**

Saves an opened FGA file to a specified file name.

P**assword**

Allows to set up the passwords used by Folder Guard.

B**uild**

Builds *.FGD file(s) for all or a specific user in the User List.

B**uild All**

Builds *.FGD file(s) for all users in the User List.

S**ettings**

Opens the Folder Guard Settings dialog box.

E**xit**

Exits Folder Guard.



New command (File menu)

Use this command to create a new FGA file in Folder Guard.

You can open an existing FGA file with the Open command.

Shortcuts

Toolbar:



Keys: CTRL+N



Open command (File menu)

Use this command to open an existing FGA file in Folder Guard.

You can create new menu files with the New command.

Shortcuts

Toolbar:



Keys: CTRL+O



Save command (File menu)

Use this command to save an FGA file you are editing to its current name. When you save a file for the first time, Folder Guard displays the **Save As** dialog box so you can name your file. If you want to change the name and location of an existing file before you save it, choose the Save As command.

Shortcuts

Toolbar:



Keys: CTRL+S



Save As command (File menu)

Use this command to save and name the FGA file you are editing. Folder Guard displays the **Save As** dialog box so you can name the file.

To save a file with its existing name, use the Save command.



Password commands (File menu)

Use these commands to set up the passwords used by Folder Guard.



Build command (File menu)

Use this command to generate the FGD file(s) for all users or for a specific user in the User List. When you choose this command, Folder Guard displays the Build dialog box.

Shortcuts

Toolbar:



Keys: CTRL+B



Build All command (File menu)

Use this command to generate the EGD file(s) for all users in the User List.

Shortcuts

Keys: CTRL+D



Settings commands (File menu)

Use these commands to change settings for Folder Guard. When you choose this command, Folder Guard displays the Folder Guard Settings dialog box.

Shortcuts

Toolbar:



Keys: CTRL+E



1, 2, 3, 4 command (File menu)

Use the numbers and filenames listed at the bottom of the File menu to open the last four FGA files you closed. Choose the number that corresponds with the FGA file you want to open.



Exit command (File menu)

Use this command to end your Folder Guard session. You can also use the Close command on the application Control menu. Folder Guard prompts you to save the FGA file, if necessary.

Shortcuts

Mouse: Double-click the application's Control menu button.
Keys: ALT+F4



Edit menu commands

The Edit menu offers the following commands:

Undo

Reverses previous editing operation, if possible.

Cut

Deletes (resets) attributes of the selected folder and moves them to the Clipboard.

Copy

Copies attributes of the selected folder to the Clipboard.

Paste

Pastes folder attributes from the Clipboard into the selected folder.

Reset Folder

Resets attributes of the selected folder to “default” for all users.

Reset User

Resets attributes of all folders to “default” for the user currently selected in the User List.

User List

Opens the Modify User List dialog box.

Permissions

Opens the Permissions for the selected user dialog box.

Access

Visibility

Modifies attributes of the selected folder for the selected user.

Attributes

Opens the Attributes for the selected folder dialog box.



Undo command (Edit menu)

Use this command to reverse the last editing action, if possible.

Shortcuts

Keys: CTRL+Z or
ALT-BACKSPACE



Cut command (Edit menu)

Use this command to remove all attributes of the currently selected folder and put them on the Clipboard.

Cutting data to the Clipboard replaces the contents previously stored there.

Shortcuts

Keys: CTRL+X



Copy command (Edit menu)

Use this command to copy all attributes of the currently selected folder to the Clipboard.

Copying data to the Clipboard replaces the contents previously stored there.

Shortcuts

Keys: CTRL+C



Paste command (Edit menu)

Use this command to replace all attributes of the currently selected folder with the attributes from the Clipboard. This command is unavailable if the Clipboard is empty.

Shortcuts

Keys: CTRL+V



Reset Folder command (Edit menu)

Use this command to assign the “default” attributes to the selected folder.

Shortcuts

Keys: CTRL+R



Reset User command (Edit menu)

Use this command to assign the “default” attributes to all folders for the user currently selected in the User List.

Shortcuts

Keys: CTRL+U



User List command (Edit menu)

Use this command to manipulate the contents of the User List. When you choose this command, Folder Guard displays the Modify User List dialog box.

Shortcuts

Toolbar:



Keys: CTRL+L



Permissions command (Edit menu)

Use this command to set up permissions for the user currently selected in the User List. When you choose this command, Folder Guard displays the Permissions dialog box.

Shortcuts

Keys: CTRL+P



Access commands (Edit menu)

Use these commands to assign a desired folder access attribute to the selected folder for the user currently selected in the User List.



Visibility commands (Edit menu)

Use these commands to assign a desired folder visibility attribute to the selected folder for the user currently selected in the User List.



Attributes command (Edit menu)

Use this command to modify the attributes of the currently selected folder. When you choose this command, Folder Guard displays the Attributes dialog box.

You can also double click on the selected folder to modify its attributes.

Shortcuts

Keys: ENTER
 ALT+ENTER



View menu commands

The View menu offers the following commands:

Toolbar

Shows or hides the toolbar.

Status Bar

Shows or hides the status bar.

User List

Shows or hides the User List.

Compact Tree

Collapses all branches which have only subfolders with default attributes; also expands all branches which have subfolders with non-default attributes.

Refresh All

Updates the folder tree.



Toolbar command (View menu)

Use this command to display and hide the Toolbar, which includes buttons for some of the most commonly used Folder Guard commands. A check mark appears next to the menu item when the Toolbar is displayed.

See Toolbar for help on using the toolbar.



Status Bar command (View menu)

Use this command to display and hide the Status Bar. The Status Bar describes the action that Folder Guard will next execute — after you select a menu item or depress a Toolbar button. It also reports on the keyboard state (Caps Lock, Num Lock, and Scroll Lock). A check mark appears next to the menu item when the Status Bar is displayed.

See [Status Bar](#) for help on using the Status Bar.



User List command (View menu)

Use this command to display and hide the User List. A check mark appears next to the menu item when the User List is displayed.



Compact Tree command (View menu)

Use this command to show all folders with non-default attributes, and collapse all folders which contain no subfolders with non-default attributes.



Refresh command (View menu)

Use this command to update the folder tree displayed in the main window of Folder Guard. Use this command after you have renamed or moved a folder with Windows Explorer.

Shortcut

Key: F5



Tools menu commands

The Tools menu offers the following commands:

Policy Editor

Runs the Windows 95 Policy Editor (PoEdit.exe).

Registry Editor

Runs the Windows 95 Registry Editor (RegEdit.exe).

System Editor

Runs the Windows 95 System Configuration Editor (SysEdit.exe).

Control panel

Opens the Control Panel.

Explorer

Runs Explorer.

Enable/Disable Folder protection

Dynamically loads/unloads the Folder Guard driver, FGuard.VxD.



Enable/Disable Folder Protection command (Tools menu)

Use this command to dynamically load/unload the Folder Guard driver (FGuard.VxD) and, therefore, to enable/disable the protection of folders. This command is useful for “on the fly” testing of folder protection — while you are running Folder Guard.

Shortcuts

Toolbar:





Help menu commands

The Help menu offers the following commands, which provide you assistance with this application:

Help Topics

Presents an index to the topics on which you can get help.

Reset Advisor

Resets Folder Guard Advisor to its original state.

About Folder Guard

Displays the version number and registration information for your copy of Folder Guard.

Note: Press SHIFT+F1 to access the Context Help command of Folder Guard. When you choose this command, the mouse pointer will change to an arrow and question mark. Then click somewhere in the Folder Guard window, such as a Toolbar button. The Help topic will be shown for the item you clicked.



Help Topics command (Help menu)

Use this command to display the opening screen of Help. From the opening screen, you can jump to step-by-step instructions on using Folder Guard and various types of reference information.

Once you open Help, you can click the Contents button, at any time, to return to the opening screen.



Context Help command

Press SHIFT+F1 to access the Context Help command of Folder Guard. When you choose this command, the mouse pointer will change to an arrow and question mark. Then click somewhere in the Folder Guard window, such as a Toolbar button. The Help topic will be shown for the item you clicked.



Reset Advisor command (Help menu)

Use this command to reset Folder Guard Advisor in its original state, so that those messages for which you have chosen the “Don’t show this message again” option will start appearing.



Folder Guard Advisor

Folder Guard Advisor is designed to assist you while you are using Folder Guard. It detects some common situations which may require your attention and displays a message describing the situation.

The message box contains the “Don’t show this message again” checkbox. If you select this option before closing the message box, this particular message will not be displayed again, until you perform the Help - Reset Advisor command of Folder Guard.

Each message displayed by Folder Guard Advisor has the “default” reply button associated with it. This button is indicated by a dashed rectangle when the message is initially displayed on the screen. If you have chosen the “Don’t show this message again” option for a particular message, the “default” reply will be assumed to be chosen by you for this message thereafter.

Note: Pressing the **Enter** key while a Folder Guard Advisor message is displayed is equivalent to choosing the first reply button (such as **Do It** or **Yes**). Pressing the **Escape** key has the same effect as choosing the second reply button (such as **Ignore** or **No**). Pressing the **Space** key is equivalent to choosing the button which currently has the focus (indicated by a dashed rectangle).



About command (Help menu)

Use this command to display the copyright notice and version number of your copy of Folder Guard. You may also use it to open the order form for Folder Guard or enter your registration information.



Shortcut menu

Folder Guard offers a shortcut menu which provides quick access to some of the commands of Folder Guard. The Shortcut menu is displayed after you click with the right mouse button within the client area of the Folder Guard window. It offers the following commands:

Access

Visibility

Cut

Copy

Paste

Reset Folder

Attributes

Duplicate commands of the **Edit menu**



Keyboard shortcuts

You can use the following keyboard shortcuts while working with Folder Guard:

To	Press
Get help on the highlighted menu item	F1
Create a new FGA file	Ctrl+N
Open an existing FGA file	Ctrl+O
Save the FGA file	Ctrl+S
Build *.FGD file(s)	Ctrl+B
Build All *.FGD file(s)	Ctrl+D
Change Folder Guard settings	Ctrl+E
Exit Folder Guard	Alt+F4
Undo the last editing operation	Ctrl+Z, Alt+Backspace
Cut data to the Clipboard	Ctrl+X
Copy data to the Clipboard	Ctrl+C
Paste data from the Clipboard	Ctrl+V
Reset folder attributes	Ctrl+R
Reset current user	Ctrl+U
Modify User List	Ctrl+L
Modify user permissions	Ctrl+P
Modify folder attributes	Enter, Alt+Enter
Refresh folders	F5
Switch between main window and User List	Tab, F6
Expand the selected folder	Right arrow
Collapse the selected folder	Left arrow

 **Toolbar**

The toolbar is displayed across the top of the Folder Guard window, below the menu bar. The toolbar provides quick mouse access to some of the more commonly used commands of Folder Guard.

To hide or display the Toolbar, choose Toolbar from the View menu (ALT, V, T). You can also drag the toolbar with the mouse to any place on your screen.

Button	Description
--------	-------------



Shortcut to the File - New command.



Shortcut to the File - Open command.



Shortcut to the File - Save command.



Shortcut to the File - Build command.



Shortcut to the File - Settings command.

The following buttons provide shortcuts to the Edit - Access commands. Clicking on any already depressed button resets the access attribute of the selected folder to the “default” access.



Full access



Read-only



No access

The following buttons provide shortcuts to the Edit - Visibility commands. Clicking on any already depressed button resets the visibility attribute of the selected folder to the “default” visibility.



Visible



Restricted



Hidden

The following buttons are also included in the toolbar:



Shortcut to the Tools - Enable/Disable Folder protection command.



Shortcut to the Help - About Folder Guard command.

The following button is shown simultaneously with the User List, in a separate toolbar:



Shortcut to the Edit - User List command.



Status Bar

The Status Bar is displayed at the bottom of the Folder Guard window. To display or hide the status bar, use the Status Bar command in the View menu.

The left area of the Status Bar describes actions of menu items as you use the arrow keys to navigate through menus. This area similarly shows messages that describe the actions of toolbar buttons as you depress them (that is, before you release them). Suppose that, after viewing the description of the Toolbar button command, you decide not to execute the command. You do this simply by releasing the mouse button while the pointer is off that particular button on the Toolbar.

The right areas of the status bar indicate which of the following keys are ON:

Indicator	Description
CAP	The Caps Lock key is ON.
NUM	The Num Lock key is ON.
SCRL	The Scroll Lock key is ON.

Title Bar

The title bar is located along the top of a window. It contains the name of the application and file.

To move the window, drag the title bar.

Note: You can also move dialog boxes by dragging their title bars.

Scroll bars

The Scroll bars are displayed at the right and bottom edges of the window. Scroll boxes inside the Scroll bars indicate your vertical and horizontal location in the file. You can use the mouse to scroll to other parts of the file.

Size command (System menu)

Use this command to resize the active window with the arrow keys. When you choose the Size command, the pointer changes to a four-headed arrow.

After the pointer changes to the four-headed arrow:

1. Press one of the DIRECTION keys (left, right, up, or down arrow key) to move the pointer to the border you want to move.
2. Press a DIRECTION key to move the border.
3. Press ENTER when the window is the size you want.

Note: This command is unavailable if you maximize the window.

Shortcut

Mouse: Drag the size bars at the corners or edges of the window.

Move command (Control menu)

Use this command to display a move the active window or dialog box with the arrow keys. When you choose the Move command, the pointer changes to a four-headed arrow.

Note: This command is unavailable if you maximize the window.

Shortcut

Keys: CTRL+F7

Minimize command (application Control menu)

Use this command to reduce the Folder Guard window to an icon.

Shortcut

Mouse: Click the minimize icon on the title bar.

Maximize command (System menu)

Use this command to enlarge the active window to fill the available space on your screen.

Shortcut

Mouse: Click the maximize icon on the title bar; or double-click the title bar.

Close command (Control menus)

Use this command to close the active window or dialog box.

Double-clicking a Control-menu box is the same as choosing the Close command.

Restore command (Control menu)

Use this command to return the active window to the size and position it occupied before you chose the Maximize or Minimize command.

No Help Available

No help is available for this area of the window.

No Help Available

No help is available for this message box.



Folder Guard Settings dialog box

Use this dialog box to specify settings for Folder Guard. The dialog box contains the following pages:

Startup

Input

Output

Misc



Startup page (Folder Guard Settings dialog box)

Use this page to specify how you want Folder Guard to operate during Windows 95 startup. This page contains the following areas:

Enable Folder Protection at Windows startup

If checked, this option configures Windows 95 so that it loads the Folder Guard driver (FGuard.VxD) during its boot process, and thereby enables the protection of folders.

Note: If you change this option, you must reboot Windows 95 in order for the new setting to take effect.

Validate user name at logon

If checked, this option causes Folder Guard to validate the user name during the Windows 95 logon procedure.

Note: If you change this option, you must reboot Windows 95 in order for the new setting to take effect.

Customize

Click this button to display the Customize Logon Prompt dialog box. This button is enabled only if the **Validate user name at logon** option is checked.

Allow logon as Default User

If checked, this option causes Folder Guard to allow logon as Default user. This option is enabled only if the **Validate user name at logon** option is checked. To logon as the “default” user, you must enter the name “Default” or press the Cancel button at the Folder Guard logon prompt.

Password

Click this button to set up the logon password for the Default user. This option is enabled only if the **Validate user name at logon** option is checked. If you do not set up this password, Folder Guard lets you logon as the default user — and does not prompt you for the password.

Log File

If checked, this option causes Folder Guard to write a record in the file specified every time a user logs on or off. This option is enabled only if the **Validate user name at logon** option is checked.

Max. # of lines

Specify the maximum number of records the log file may contain (default is 100). This option is enabled only if the **Validate user name at logon** and **Log File** options are checked. When the number of lines in the log file reaches the maximum value specified, the first record (the oldest one) is deleted from the file, leaving room for the more recent records. Each record takes about 80 bytes in the log file.



Customize Logon Prompt dialog box

Use this dialog box to specify custom texts to be used by Folder Guard while validating user name at logon. This dialog box contains the following areas:

Title

Text to display in the title bars of all windows shown by Folder Guard while validating the user name. If empty, the text *Folder Guard* will be displayed in the title bars.

Text

Text shown in the dialog box prompting the entry of user name to logon to Windows 95. If empty, the following text is displayed: *Type your user name to logon to Windows:*

On empty user name

Message shown by Folder Guard if the user does not provide his or her name. If empty, the following text is displayed: *You forgot to enter your user name. Click OK to enter it now.*

On invalid user name

Message shown by Folder Guard if the user enters an invalid name. If empty, the following text is displayed: *Windows could not validate your user name. Make sure you typed it correctly, or contact your administrator.*

Prompt for Default user's password

Text shown by Folder Guard in the dialog box prompting the entry of the Default user's password. If empty, the following text is displayed: *Type your password to logon as Default user:*

On invalid Default user's password

Message shown by Folder Guard if the user enters an invalid Default user's password. If empty, the following text is displayed: *Invalid password.*

Reset

Click on this button to clear all areas in the dialog box. This will restore Folder Guard to the default values for all messages.

Test

Click on this button to test the procedure of validating the user's name. The custom messages, if any, will be used while displaying the dialog boxes.



Input page (Folder Guard Settings dialog box)

Use this page to specify the active FGA file. This page contains the following areas:

Active FGA file

Path to the FGA file you want to be active. If you want no FGA file to be active, clear this box.

Reload at startup

If checked, this option causes Folder Guard to automatically open the active FGA file during its initialization. This option is ignored if no active FGA file has been specified in the *Active FGA file* area.

Activate current file

Check this box if you want the path of file being edited to be inserted in the *Active FGA file* area. This control is disabled if the file being edited has no name (untitled).



Output page (Folder Guard Settings dialog box)

Use this page to specify how and where FGD files should be built when you use the File - Build or File - Build All commands. This page contains the following areas:

Build *.FGD files on saving the active FGA file

If checked, this option causes Folder Guard to build all *.FGD files every time you save the active FGA file. This helps you keep the *.FGD files consistent with the active FGA file.

Working folder

The path to the working folder of Folder Guard.



Misc page (Folder Guard Settings dialog box)

Use this page to change miscellaneous options of Folder Guard. This page contains the following areas:

Show full path in the title bar

If checked, this option forces Folder Guard to display the full path of the FGA file being edited in its title bar. If cleared, only the name of the file is displayed in the title bar.

Show ‘splash screen’ at startup

If checked, this option allows Folder Guard to display the “splash screen” with information about Folder Guard at its startup. If cleared, you will not see the splash screen at startup.

Re-enable folder protection at exit

If checked, this option causes Folder Guard to restore the status of folder protection at exit. That is, when you run Folder Guard, it always disables the folder protection. When you exit Folder Guard, it re-enables the folder protection — providing that the protection was enabled before you ran Folder Guard. If this checkbox is cleared, the folder protection remains disabled when you exit Folder Guard.

Prompt to activate FGA file

If checked, this option causes Folder Guard to prompt you to activate the FGA file when you save the FGA file under a different name than the one for the currently active FGA file.



Build dialog box

Use this dialog box to generate *.FGD file(s) to be used by the Folder Guard driver, FGuard.VxD, while protecting the folders. This dialog box contains the following areas:

Build *.FGD file(s) for:

All users in User List

When selected, this option causes Folder Guard to build *.FGD files for all users listed in the User List. This option has the same effect as the File - Build All command.

Selected user only

When selected, this option causes Folder Guard to build an FGD file for the specified user only.

Note: Whenever you build an FGD file for a particular user, the FGD file for the Default user is rebuilt as well.



Modify User List dialog box

Use this dialog box to manipulate the contents of the User List. This dialog box contains the following areas:

Users

The list of users currently included in the User List.

Add

Click this button to add a new name to the User List. This will display the Add User dialog box.

Add Existing

Click this button to add a new name to the User List by choosing the name from the list of known users of your computer. This will display the Add Existing User dialog box.

Remove

Click this button to remove the selected name from the User List.

Rename

Click this button to rename the selected name in the User List. This will display the Rename User dialog box.

Move Up

Move Down

Use these buttons to change the order of names displayed in the User List.



Add User dialog box

Use this dialog box to specify the name to be added to the User List. This dialog box contains the following areas:

Add new user to the User List

Enter the name of the user in this box.

Choose

Click this button to select the user's name in the list of known users of your computer. This will display the Choose Existing User dialog box.



Rename User dialog box

Use this dialog box to change a name in the User List. This dialog box contains the following areas:

Rename user

Enter the new name in this box.

Choose

Click this button to select the user's name in the list of known users of your computer. This will display the Choose Existing User dialog box.



Choose Existing User dialog box

Use this dialog box to choose the user's name from the list of known users of your computer.



Add Existing User dialog box

Use this dialog box to choose the user's name from the list of known users of your computer. Click on the **Add All** button to add all known user's names to the User List.



Attributes dialog box

Use this dialog box to assign attributes to the currently selected folder. This dialog box contains the following areas:

Path

Shows the full path to the folder which attributes are being modified.

User

Shows the user for whom the attributes of the folder are displayed in the *Attributes* area. You may select any user in this list to modify the attributes of the selected folder for a particular user.

Attributes

Shows the access and visibility attributes of the selected folder for the user selected in the *User* area.

Reset...

Press this button to assign the “default” attributes to the selected folder for all users. This is equivalent to the Edit - Reset Folder command.



Permissions dialog box

Use this dialog box to assign permissions to the user currently selected in the User List. This dialog box contains the following pages:

General
Drives

Click on the icons next to the descriptions of the permissions to control the availability of the corresponding resources for the current user.

Icons Description



Makes the resource available for the current user.



Makes the resource unavailable for the current user.



Does not change the availability of the resource for the current user (the “default” availability).

Note: Some of the permissions take effect only after the user logs off and then logs back on to Windows 95, or after Windows 95 reboots.

Note: If you assign the “default” availability of a resource to any user other than the “Default user”, Folder Guard instead uses the corresponding permission assigned to the “Default user” for the current user. The following icons are used to represent such permissions:



The resource will be available to the current user since it is made available for the “Default User”.



The resource will be unavailable to the current user since it is made unavailable for the “Default User”.

You can use this feature to simplify your work: First make the assignments of the permissions common to all users as the permissions to the “Default user”. Then assign to the other users only those permissions which you want to differ from the permissions set for the “Default user”.



General page (Permissions dialog box)

Use this page to assign the general permissions to the user currently selected in the User List.



Drives page ([Permissions](#) dialog box)

Use this page to control the visibility of the drive icons in the Windows 95 shell windows (such as My Computer) for the user currently selected in the [User List](#).

Note: The permissions presented here do not affect the visibility of the root folders on the drives. Use the [Folder Attributes](#) to control the visibility of the root folders.



FGuard.exe

FGuard.exe is the file name of the main application of Folder Guard. You use this application to assign desired access rights to the folders and control other Folder Guard settings. Windows 95 runs FGuard.exe when you choose **Folder Guard** in Start Menu.

With FGuard.exe you can open and save the *.FGA files. FGuard.exe also generates the following files: *.FGD, FGuard.unm, FGuard.cfg, FGuard.lic.

FGuard.exe uses file FGuard32.dll during its operation; the latter must be present in the same folder in order for FGuard.exe to operate.

When you run FGuard.exe, it determines whether the folder protection is enabled. If this is the case, FGuard.exe disables the protection — thereby giving you full access to all folders on your computer while using FGuard.exe. When you exit FGuard.exe, it re-enables the folder protection according to the new settings, unless you have opted otherwise (by using the Settings command).



FGKey.exe is a utility allowing you to dynamically enable/disable the protection of folders.

When you run FGKey.exe without specifying any switches on its command line, it determines whether the folder protection is currently in effect and acts as follows:

- If the protection is not enabled, FGKey.exe prompts you to enable it. If you reply “Yes” to the prompt, FGKey.exe enables the protection.
- If the protection is enabled, FGKey.exe prompts you to enter the folder access password. If you type in the valid password, FGKey.exe disables the folder protection. If the folder access password has not been set up, FGKey.exe does nothing (that is, it leaves the protection in effect).

You can customize this behavior by using one of the following command line switches with FGKey.exe:

Switch Description

- /S Silent operation. FGKey.exe works in the same way as described above, except that it does not prompt you to enable it (the “Yes” reply is assumed), and does not show any messages if its operation was successful. FGKey.exe does show the password prompt and error messages, though.
- /E Enables folder protection. If folder protection is already enabled, FGKey.exe does nothing, leaving the protection enabled.
- /D Disables folder protection, prompting for the folder access password. If folder protection is already disabled, FGKey.exe does nothing, leaving the protection disabled.

Note: Only one or no switch can be specified on the command line. If you specify an invalid switch, FGKey.exe ignores it and continues to operate as if you had specified no switch on the command line.

Note: If you have enabled folder protection with FGKey.exe, it will be in effect only until Windows 95 reboots — unless you also have selected the “Enable Folder protection at Windows 95 startup” option in the Settings dialog box.

FGKey.exe uses FGuard32.dll during its operation; the latter must be present in the same folder in order for FGKey.exe to work.



FGuard.vxd

FGuard.VxD is the core module of Folder Guard. This is the file which actually performs the protection of folders. FGuard.VxD can be loaded in two ways — statically or dynamically.

Windows 95 loads FGuard.VxD *statically* during its boot process, if the following key in the Registry exists:

```
HKEY_LOCAL_MACHINE\ System\ CurrentControlSet\ Services\ VxD\ FGUARD
```

And also, if the string variable “StaticVxD” under this key contains a valid DOS path to FGuard.VxD. The path must not contain “long” file names; the 8.3 name aliases must be specified for the “long” components of the path. Folder Guard prepares and writes this variable into the Registry for you when you select the “Enable Folder protection at Windows startup” option in the Settings dialog box. You can also add/remove this variable manually, or by using the FGuard.adm file with the Windows 95 System Policy Editor.

FGuard.VxD can also be loaded/unloaded dynamically, by running FGKey.exe.

Whenever FGuard.VxD is loaded (statically or dynamically) into Windows 95 memory, and whenever a user logs on or off while FGuard.VxD is loaded into memory, the following occurs:

- FGuard.VxD searches for the appropriate FGD file. If such a file is found, FGuard.VxD starts to protect folders according to the data contained in the FGD file.
- FGuard.VxD searches for the licensing information. If no valid licensing information is found, FGuard.VxD starts to display the “Disable Folder Guard” prompt. The interval between the prompts is first set to 1 minute, then increased to 2, 4, and 8 minutes.



FGuard32.dll

This file contains common routines used by FGuard.exe, FGKey.exe, and Setup.exe. None of these programs will work if the FGuard32.dll file is missing. FGuard32.dll is *not* used by FGuard.VxD.

This file is also used by Folder Guard while performing the validation of user names at logon. If you selected this option, FGuard32.dll must be present in the working folder in order for Folder Guard to successfully validate user names.

 **FGuard.cfg**

This file is used by FGuard.exe to store its configuration settings between sessions. FGuard.cfg is created when you run FGuard.exe for the first time. The information stored in FGuard.cfg includes: position of the main window of Folder Guard on the screen, positions of its toolbars, options and settings of Folder Guard, and the Administrator's password.

In order for FGuard.cfg to be used by FGuard.exe, it must be located in the same folder from which you run FGuard.exe. If FGuard.exe cannot find FGuard.cfg, it restores its settings and options to their default values. When you exit FGuard.exe, it overwrites file FGuard.cfg with the new settings.

Folder Guard does not store its settings in the Registry (as do many other Windows 95 applications) because it is likely to be run by you (the Administrator) while logging onto Windows 95 under different user names and, possibly, from different computers (that is, if you are using Folder Guard on a network).



FGuard.lic

This file can be used to supply the licensing information for FGuard.VxD when you use Folder Guard on a large network.

Normally, when FGuard.VxD is loaded into Windows 95 memory, it searches for the licensing information in the local Registry. On a large network, the Administrator can use FGuard.lic to avoid the time-consuming practice of manually entering the required licensing information into the Registry on each computer. How? Simply by placing this information into the FGuard.lic file.

The FGuard.lic file is created for you automatically when you enter the Registration Code using the **Help - About** command of Folder Guard. However, this file is not created if the number of computers in your license is less than 4.

You may also manually create this file. For example, if Folder Guard is registered to the name “FooSoft, Inc.”, for use on 10 computers, and the Registration Code is 12345, then you can create FGuard.lic as follows:

- Run Notepad.
- Enter the name, number of the computers and the Registration Code, separated with vertical lines (ASCII character 124), as a single line:

```
FooSoft, Inc.|10|12345
```

- Save the file in the working folder, using the name “FGuard.lic” in the Save As dialog box.
- Exit Notepad.

Note: In order for this file to be used by FGuard.VxD, it must be named FGuard.lic and placed in the working folder. It must also contain valid registration information, and the number of computers in your license must be 4 or more. If any of these conditions is not satisfied, FGuard.VxD ignores the information supplied by the FGuard.lic file.



FGuard.unm

This is an auxiliary file, which Folder Guard may create in the working folder while building the *.FGD files. Folder Guard places information in FGuard.unm which helps FGuard.VxD determine which FGD file should be used for each user to perform the protection of folders. If you see this file in the working folder, do not modify or delete it.



FGuard.adm

File FGuard.adm contains templates for the Windows 95 System Policy Editor. You can use FGuard.adm to control some settings of Folder Guard with the System Policy Editor, and to automate setting up Folder Guard on multiple computers in a network.

To use this file, you must first install System Policies, and merge the FGuard.adm file with the active template file. You can merge these two files using any plain text editor, such as Notepad:

- Run Notepad and open the active template file (usually C:\Windows\Inf\Admin.ADM — you can determine the active template file by running the System Policy Editor and choosing the Options - Template command in its menu).
- Run another instance of Notepad and open the FGuard.adm file. At this step, your screen should display two open Notepad windows.
- FGuard.adm contains two sections, CLASS MACHINE and CLASS USER. Merge these sections with the appropriate sections of the active template file (by copying them onto the Clipboard and pasting into the second Notepad window).
- Save the active template file and close both Notepad windows.

Note: If you have set up the logon password for Default user, you must enter the (encoded) password into the active template file before using its “Allow logon as Default user” option. The encoded password for the Default user is placed by Folder Guard into the local Registry, in the variable “DefUserData”, under the key HKEY_LOCAL_MACHINE\ System\ CurrentControlSet\ Services\ Folder Guard\ NetworkProvider. Refer to the comments in the FGuard.adm file for instructions on adding the encoded password to the template file.

Now run the System Policy Editor and choose File - Open Registry, or open the active policy file. Both the “Local User” and the “Local Computer” entries should now have additional sets of settings, in the “Chaosoft -- Folder Guard” branches.



REGISTRY.BAT

REGISTRY.BAT is a simple MS-DOS batch command file, which you can use to automate the process of backing up and restoring the Windows 95 Registry.

Syntax:

REGISTRY

displays information on using the utility.

REGISTRY BACKUP

backs up the Registry files.

REGISTRY RESTORE

restores the Registry files.

The commands above should be entered at the MS-DOS command prompt, after rebooting Windows 95 in the “command prompt only” mode. (This batch file will refuse to run if invoked from a MS-DOS window while Windows 95 is running). To simplify your work, Folder Guard includes two PIF files, which supply the required arguments to the batch file:

Reg_b.pif (Installed as “Registry Backup” in Start menu)
switches Windows to the MS-DOS mode and invokes **REGISTRY BACKUP**.

Reg_r.pif (Installed as “Registry Restore” in Start menu)
switches Windows to the MS-DOS mode and invokes **REGISTRY RESTORE**.

Before using this batch file, you may wish to review it and change the variables it uses. REGISTRY.BAT defines and then uses the following variables:

WINDIR Default: C:\WINDOWS
should contain the complete path to the folder in which Windows 95 is installed. When you run REGISTRY.BAT, it verifies that this variable contains a valid path before performing the work. This variable is used when locating the System.dat and User.dat files.

BACKUPDIR Default: C:\REGBKUP
should contain the complete path to the folder in which you want to create copies of the Registry files. If this folder does not exist when you back up the Registry, REGISTRY.BAT creates it. If this folder does not exist when you restore the Registry, REGISTRY.BAT displays an error message.

PROFILESDIR Default: %_WINDIR_%\Profiles
should contain the complete path to the root folder in which you keep the user profiles. If this variable points to a folder which does not exist when you run REGISTRY.BAT, the utility displays an error message. This variable is used when locating the user-specific User.dat files. If you don't use user profiles, or want to skip their processing, set this variable to contain a single underscore character (“_”).

You can modify the contents of the REGISTRY.BAT file with any plain text editor, such as Notepad.



How FGuard.VxD searches for the FGD file(s)

FGuard.VxD first attempts to read the string variable “FGD” in the local Registry, under the key:

HKEY_CURRENT_USER\ Software\ ChaoSoft\ FGD.

If this variable contains the DOS path to an FGD file, FGuard.VxD uses this file to perform the protection of folders for this user.

Note: Folder Guard does not set up this variable, so it usually does not exist. You may, however, set up this variable (using file FGuard.adm with the Windows 95 System Policy Editor, for example), to force FGuard.VxD use a specific FGD file for a particular user.

If the previous step fails, FGuard.VxD determines the name of the user currently logged on to Windows 95 and looks for the FGD file with the same name in the working folder.

If the previous step fails, FGuard.VxD uses the “Default.FGD” file (in the working folder) to perform the protection of folders.



How FGuard.VxD searches for the licensing information

FGuard.VxD first attempts to find the licensing information in the local Registry, under the key:

HKEY_LOCAL_MACHINE\ Software\ ChaoSoft\ Folder Guard\ Setup

If this key exists, FGuard.VxD reads the values of the following *string* variables: "Registered To", "Number of Users", and "Registration Code". FGuard.VxD then verifies the validity of the Registration Code.

If the previous step fails, FGuard.VxD attempts to find the registration information in file FGuard.lic, which is assumed to be located in the working folder.



How Folder Guard validates user name at logon

If you enable the Validate user name at logon option, Folder Guard checks the user name against the list of users known to Windows 95. This list is maintained by Windows 95 in the Registry, under the key:

HKEY_LOCAL_MACHINE\ Software\ Microsoft\ Windows\ CurrentVersion\ ProfileList

Each user is represented by a separate subkey under this key. If the user name matches the name of one of the subkeys, the user name is considered valid. If none of the subkeys has the same name as the name entered by the user at the Folder Guard logon prompt, the name is considered invalid.



How to backup the Windows 95 Registry

The Registry is a very important part of Windows 95. It is a place where Windows 95 stores information about hardware and software installed on your computer. Whenever you add or remove a device, install a new software product, change a device settings, modify options for a program — all these changes (and others, too) are written by Windows 95 into the Registry.

Physically, the Registry consists of a number of files. To backup the Registry, you must backup its key files. The following two files are the core components of the Registry; they are always present in the Windows 95 folder (usually, C:\Windows):

System.dat

contains mostly information about the hardware configuration of the computer.

User.dat

contains mostly information about the software installed on the computer.

In addition, if user profiles are enabled, the user-specific parts of the Registry are stored in separate User.DAT files, one per user. (These files are usually located in folders C:\Windows\Profiles\
<user_name>.) Whenever a user logs on the system, Windows 95 restores the specific settings for this user by merging the user-specific User.DAT file with the “generic” User.DAT file.

It is important to backup the Registry before making any significant changes to your system. You can backup the Registry by making copies of the files mentioned above. If you need to restore the Registry, replace its existing files with the copies you have saved during backup. You can manually perform these operations, or you may wish to use the REGISTRY.BAT utility supplied with Folder Guard.

For more information about the Registry, please consult your Windows 95 documentation.



How to enable user profiles on a stand-alone computer

*Please note that features described here are built-in into Windows 95 and are **NOT provided by Folder Guard**. The information below is provided only for reference purposes for your convenience. If you have any questions regarding the features described below, you should contact the technical support department of Microsoft, NOT Chaosoft.*

This section describes how to enable user profiles on a stand-alone computer, not connected to a network. For complete information please refer to the Windows 95 Resource Kit.

- Step 1. Backup the registry, in case of emergency.
- Step 2. Prepare the Desktop: arrange folders and shortcuts on the Desktop as you want them to appear for the user when this user first logs on to Windows 95 under his or her own name. Move those items which you don't want to be used by other users into a separate folder somewhere on your hard disk; later, you will be able to return them to your personal Desktop, when you log on under your own name. Do the same with the Start Menu; its contents is maintained by Windows 95 (usually in the C:\Windows\Start Menu folder).
- Step 3. Enable user profiles: Open the Control Panel and double-click on "Passwords". In the dialog box, select the "User Profiles" page and check the "Users can customize their preferences and desktop settings" option. Also check both options in the "User Profile settings" group, on the same page. Press OK and restart Windows 95.
- Step 4. Create user profiles: When Windows 95 reboots, enter your name and password at the logon prompt and let Windows 95 save your personalized settings for future use. Log off and repeat this procedure for all other users of your computer. You may also wish to create a profile for a "Guest" user, just in case.
- Step 5. Restore your Desktop and Start Menu: log on under your own name and move all items you've saved while performing Step 2 back to your Desktop and Start Menu.

Now you can run Folder Guard and set up folder attributes and permissions as desired for each user.



A Crash Course in System Policies

Please note that features described here are built-in into Windows 95 and are **NOT provided by Folder Guard**. The information below is provided only for reference purposes for your convenience. If you have any questions regarding the features described below, you should contact the technical support department of Microsoft, NOT Chaosoft.

System Policies is an optional component of Windows 95 which you can use to enforce some Windows 95 settings on the per-user basis. For complete information on installing and using System Policies, consult the Windows 95 Resource Kit.

To make System Policies work on your computer, you must first install them on your computer:

- Insert your Windows 95 CD into the CD-ROM drive.
- Open Control Panel, double click on “Add/Remove Programs”, select the “Windows Setup” page, and click on “Have disk” button.
- Enter the following path into the dialog box: D:\ADMIN\APPTOOLS\POLEDIT\POLEDIT.INF (replace D: with the drive letter that designates your CD-ROM) and click on OK.

The System Policy Editor uses files of two kinds: template files (extension ADM) and policy files (extension POL). Template files contain information that guides the System Policy Editor in modifying the Registry in response to your commands. Policy files contain the restrictions you are setting up for each user and computer.

After you have installed System Policies, run the System Policy Editor, choose the Options - Template command in its menu, and select the template file you want to be active (usually it is ADMIN.ADM; often this file is installed in the C:\Windows\Inf folder).

Now create a policy file:

- Run the System Policy Editor and choose File - New in its menu.
- Use commands of the System Policy Editor to create entries for users of your computer and set up their policies.
- Choose File - Save and save the file. You may wish to name the file CONFIG.POL and save it in the Windows 95 folder (usually, C:\Windows), although you are free to select other name and location for this file.

Finally, you must activate the policy file you have just created. On a stand-alone computer, do the following:

- Run the System Policy Editor and choose File - Open Registry in its menu.
- Open the “Local Computer” item and find the following entry: Network - Update - Remote Update. Check this checkbox.
- In the “Settings for Remote Update” area (at the bottom of the same dialog box), specify the following information:

Update Mode: *Manual*

Path for manual update: (enter here the path to the Policy file you wish to be active; for example: “C:\WINDOWS\CONFIG.POL”, omitting the quotation marks).

- Press OK to close the dialog and choose the File - Save command in the menu to save the changes to the Registry.

Note: The path to the active policy file is stored in the Registry in the variable “NetworkPath”, under the key:

HKEY_LOCAL_MACHINE\System\CurrentControlSet\Control\Update

From now on, whenever a user logs on to Windows 95, the restrictions you have specified in the policy file will be applied to the user’s settings.



MSDOS.SYS: Useful commands

*Please note that features described here are built-in into Windows 95 and are **NOT provided by Folder Guard**. The information below is provided only for reference purposes for your convenience. If you have any questions regarding the features described below, you should contact the technical support department of Microsoft, NOT Chaosoft.*

In Windows 95, MSDOS.SYS is a text file which may be used to control the boot process. It contains a [Paths] section that lists the locations for other Windows 95 files (such as the Registry) and an [Options] section that you can use to control the boot process.

If you want to change any of the values in the MSDOS.SYS file, you can use any plain text editor (like Notepad).

IMPORTANT: Before you edit the MSDOS.SYS file, you should first make a backup copy of it. The original file is located in the root folder of your boot drive. If you delete the MSDOS.SYS file, your computer will not start. Also, make sure you can boot your computer with a floppy disk, and that the disk contains a plain text editor — one you can use to modify the MSDOS.SYS file, if anything goes wrong.

The [Options] section can contain the following settings:

BootDelay=<Seconds> Default: 2
Sets the amount of time the "Starting Windows 95" message remains on the screen before Windows 95 continues to boot. If this setting is 0, then you will NOT be able to press the F8 key when "Starting Windows 95" appears to invoke the Startup menu.

BootSafe=<Boolean> Default: 0
A setting of 1 forces your computer to boot in safe mode.

BootGUI=<Boolean> Default: 1
A setting of 1 forces the loading of the GUI interface. A setting of 0 disables the loading of the GUI interface.

BootKeys=<Boolean> Default: 1
A setting of 1 enables the use of the function key boot options (that is, F4, F5, F6, and F8). A setting of 0 disables the use of these function keys during the boot process.
Note: A setting of BootKeys=0 overrides the use of BootDelay=n.

BootMenu=<Boolean> Default: 0
A setting of 1 enables the Startup menu. If this setting is 0, then you must press the F8 key when "Starting Windows 95" appears to invoke the Startup menu.

BootMenuDefault=<Number>
Default: 1 if the system is running correctly, 3 if the system hung in the previous instance.
Use this setting to set the default menu item for startup.

BootMenuDelay=<Number> Default: 30
This setting is used to set the number of seconds your system will pause on the Startup menu. If the number of seconds counts down to 0 without intervention, the BootMenuDefault is activated.
NOTE: This option will not function unless BootMenu=1 has been specified.

BootMulti=<Boolean> Default: 0

A setting of 0 disables the multi-boot option. (For example, with a setting of 0 you cannot boot your previous operating system.) A setting of 1 enables the F4 and F8 keys to boot your previous operating system.

Note: This setting is set to 0 by default to prevent you from inadvertently starting MS-DOS and damaging data by running a disk utility that does not recognize long file names.

BootWarn=<Boolean> Default: 1

A setting of 0 disables the safe mode boot warning message and the Startup menu.

BootWin=<Boolean> Default: 1

A setting of 1 forces Windows 95 to load at startup. A setting of 0 disables Windows 95 as your default operating system (this is useful only if you have MS-DOS version 5.x or 6.x on the computer).

Note: Pressing F4 inverts the default only if BootMulti=1. (For example, pressing the F4 key with a setting of 0 forces Windows 95 to load.)

DBLSpace=<Boolean> Default: 1

A setting of 1 allows the automatic loading of the DBLSPACE.BIN file. A setting of 0 prevents the automatic loading of this file.

DRVSpace=<Boolean> Default: 1

A setting of 1 allows the automatic loading of the DRVSPACE.BIN file. A setting of 0 prevents the automatic loading of this file.

Note: Windows 95 uses either Dblspace.bin or Drvspace.bin if either is present in the root folder of the boot drive at startup. To prevent a compression driver from being loaded at startup, use both settings in the MSDOS.SYS file. For example:

```
DBLSpace=0
DRVSpace=0
```

Logo=<Boolean> Default: 1

A setting of 1 forces the default Windows 95 logo to appear. A setting of 0 prevents the animated logo from being displayed.

Network=<Boolean> Default: 0

A setting of 1 means the network was installed and adds "Safe mode with network support" as an option on the Windows 95 Startup menu.

The MSDOS.SYS file also contains a section with seemingly useless information. These entries are required for compatibility with programs that expect MSDOS.SYS to be at least 1024 bytes in length. For example, if an anti-virus scanner detects that MSDOS.SYS is smaller than 1024 bytes, it may assume that a virus has infected this file.



Can I upgrade to Folder Guard from FM Guard ?

Yes, if you are a registered user of our utility “File Manager Guard for Windows 3.1x” (also known as FM Guard) you may register Folder Guard for Windows 95 at a discount price. Please refer to file *Order.txt* for more information.



How do I enter the Registration Code ?

You are prompted to enter your name and Registration Code at the end of the installation procedure.

Alternatively, choose the **Help - About** command of Folder Guard, and click on the “Register” button in the dialog box.

Related topics:


[This is "Try Before You Buy" software](#)

[What do you get when you order a license for Folder Guard](#)

[How to order a license for continued use of Folder Guard](#)



How do I determine the status of folder protection?

If you are running Folder Guard, the status of the protection is indicated by the state of the “Toggle Folder Protection” button in the toolbar: . If this button is pressed, the folder protection is currently enabled. If the button is not pressed, the folder protection is currently disabled.

If you are not running Folder Guard, you can determine the status of the protection by running FGKey.exe (represented by the “Toggle Folder Protection” command in the Windows Start Menu): If you are prompted to enable the protection — it is currently not enabled. If, however, you are prompted to enter a password to disable the protection, the protection is currently in effect.



Will Folder Guard slow down my computer?

Folder Guard is designed to perform the protection of folders with minimum overhead. You will not notice any decrease of performance of your computer, unless you assign separate folder attributes to thousands of folders. If you are concerned about the performance, try to reduce the number of folders which have non-default attributes. For example, instead of assigning the “hidden” attribute to a group of subfolders of the same parent folder, make the parent folder “hidden” instead.



How do I rename a folder in the Folder Guard window?

You cannot rename or otherwise manipulate (copy, move, delete) folders or files with Folder Guard. If you want to rename/copy/move/delete a folder, you must do it with Explorer. To force Folder Guard to update its listing of folders in the main window, use its View - Refresh command (or press F5).



How do I hide drive icons?

Windows treats the root folders of the drives and drives themselves as separate items. When you use Folder Guard to assign the “Hidden” attribute to a drive, you are hiding the root folder of the drive, but not the drive itself.

To hide the drive icons, use the Edit - Permissions command of Folder Guard.



Can I hide the “My Computer” folder?

Unfortunately, Windows 95 does not provide a way to hide this folder alone. You can only hide all items on your Desktop as a group, by using the Edit - Permissions command of Folder Guard.

If you assign the “Hidden” attribute to “My Computer” using Folder Guard, this attribute will be applied to the root folders of the drives, but not to “My Computer” itself. This is a limitation of the current implementation of Windows 95.



I forgot the password...

If you forget the folder access password or the logon password for the Default User, then the only way to solve the problem is to set up a new password — by running Folder Guard and using its appropriate commands.

If you forgot the Administrator's password and therefore cannot run Folder Guard, you must delete the FGuard.cfg file in the folder from which you run FGuard.exe (usually it is located in the folder in which you have installed Folder Guard). Be aware, however, that this will also reset all other settings of Folder Guard (such as the active FGA file and the working folder) to their defaults. You will therefore need to manually change these settings.

If you cannot delete the FGuard.cfg file (for example, because it is protected by Folder Guard), you must boot Windows 95 in the "safe" or "command prompt only" mode. The folder protection is not enabled in either of these modes, so you will be able to delete FGuard.cfg.



How can I get printed documentation for Folder Guard?

The documentation for Folder Guard is available only in the on-line form — as the Help file you are reading now.

You can print out the Help, though: just press the “Print...” button in the Help Topics dialog box, (displayed after you click the Contents button while browsing Folder Guard Help).

